



SHIRT

STYLE&DESIGN MANUAL

## Instruction for RCMTM Shirt Style Manual

This manual is used by the business department authorized by the platform, and the business department can selectively carry out marketing promotion according to the ma

1. The codes in brochure with“ △ ” before means the standard craftsmanship.
2. If customer do not choose any style for one item, we will do the standard craftsmanship.
3. The craftsmanship in same item can not be chosen at the same time; also, please do not choose conflict crafts, such as 5101 placket and 5540 inner plain front contrast fabric, 5410 round cuff with one buttonhole &button and 5465 french cuff double pleats could not be chosen at the same time.
4. If customers choose the default codes, then no need to input the code in the system, you only need to enter the personalized options.
5. The collar type pictures in this brochure may have some difference with the final outcome. Because the collar point length, collar band height, collar opening space and angles all would affect the final collar type.
6. If this brochure include the personalized options which client request, please input the code in the system; if the brochure does not have the options the client request, please contact RCMTM.
7. We will continue to supplement according to the market situation newly design options, refine and perfect the options we are already have.
8. The interpretation right of this design manual belongs to RCMTM
9. The client has understood the contents of this manual and accepts the requirements before use of this manual

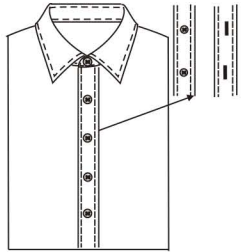
Placket Style	1
Front Style	3
Placket Width	5
Placket Button Quantity	5
Cuff Style	5
Cuff Special style	9
Back Style	12
Yoke Style	12
Pocket Style	13
Flap Style	14
Pocket Quantity	15
Pocket Size	15
Gusset	15
Bottom Style	15

Collar Style	16
Collar Special Style	19
Collar Band Style	21
Collar and Cuff Contrast	22
Collar Point Size	23
Collar Pick Stitching	23
Collar Tie Space Size	24
Collar Band Height	24
Collar Band Width	24
Middle Line of the Collar	25
Collar Stay and Collar Button	25
Cuff Pleat Style	26
Double-layer Collar Contrast	26
Short Sleeve Style	27

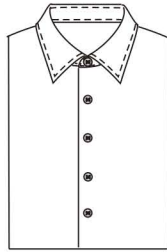
Cuff Contrast for Short Sleeve . . . . .	27
Front Placket Contrast . . . . .	28
Cutting Direction . . . . .	29
Monogram Position . . . . .	31
Placket Buttonhole Style . . . . .	35
Shoulder Epaulet . . . . .	36
Contrast Fabric Position . . . . .	36
Care Label . . . . .	37
Brand Label . . . . .	37
Fabric Label . . . . .	37
Origin Label . . . . .	37
Cuff Placket Style . . . . .	38
Sideseam Style . . . . .	38
Top Stitch Style . . . . .	38
Sleeve Belt Position . . . . .	38
Buttonhole Style in the Middle of Back Collar. . . . .	39
Buttonhole Style . . . . .	39

Pick Stitch on Body . . . . .	39
Accessories . . . . .	40
Bowtie Style . . . . .	40
Customer Apointed Thread . . . . .	41
Customer Apointed Button . . . . .	42
Cuff Width . . . . .	42
Placket Buttonhole . . . . .	43
Canvas Style . . . . .	44
Top Stitch Style . . . . .	44
Sleeve Placket Button Position . . . . .	45
Accessories Requirement . . . . .	45
Front Button Style . . . . .	45
Distance from First Placket Button to Collar Seam. . . . .	46
Size Adjustment . . . . .	45
Monogram Font . . . . .	45
New Customer Order Requirement . . . . .	45
Buttoning Style . . . . .	49

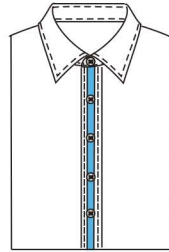
# Placket Style



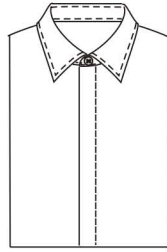
520Q Left & right placket front



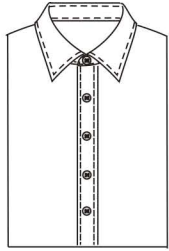
5100 Plain front



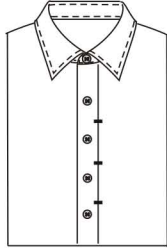
532T 1.5cm piping on central of placket, customer supplied piping



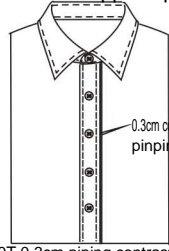
5103 Hidden button front



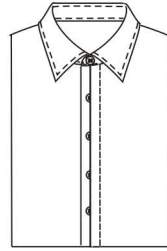
5102 Un-functional placket front



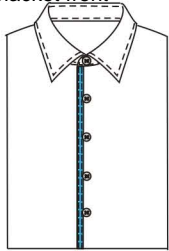
521C Outside 3 fold front, knot



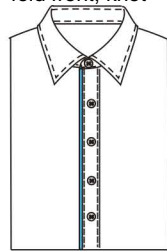
530T 0.3cm piping contrast in left placket (placket width do not contain piping)



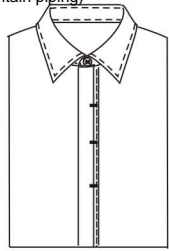
5105 1/2 hidden button front



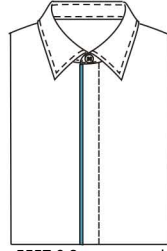
531Z Normal placket with 1.5cm welt on each side, customer appointed welt



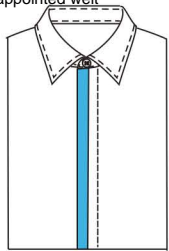
521G Placket width 3.2cm with 0.3 contrast on right



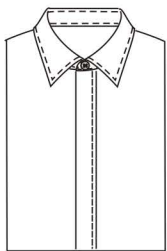
521E Fly front for tuxedo



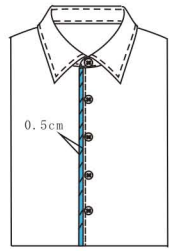
5557 0.3cm exposed part for inner placket of hidden front with appointed fabric



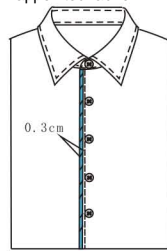
521F Half hidden front placket with appointed fabric



521D Hidden pleat, 0.5cm pic stitch

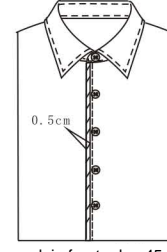


521B Inner plain front edge 45 degree diagonal cut and splice, outer showing 0.5 cm, splice piping customer appointed fabric

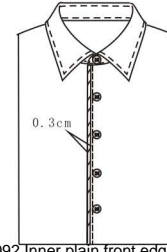


521A Inner plain front edge 45 degree diagonal cut and splice, outer showing 0.3cm, splice piping customer appointed fabric

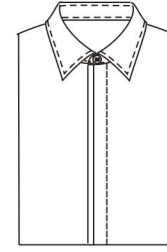
# Placket Style



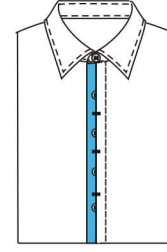
5093 Inner plain front edge 45 degree diagonal cut and splice, outer showing 0.5cm, splice piping use body fabric



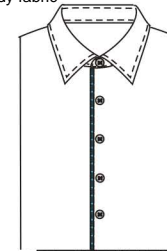
5092 Inner plain front edge 45 degree diagonal cut and splice, outer showing 0.3cm, splice piping use body fabric



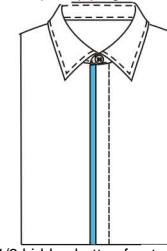
520F 1/3 hidden button front



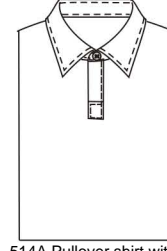
5555 1/2 hidden placket, 1/2 hidden placket contrast, customer appointed



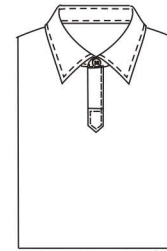
532A Normal placket with 1cm welt on each side, customer appointed welt



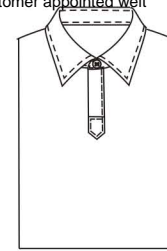
5556 1/3 hidden button front, inner hidden part use contrast fabric, customer appoint contrast fabric



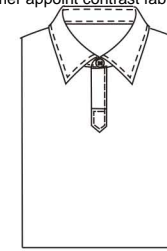
514A Pullover shirt with only one button and buttonhole (on collar band)



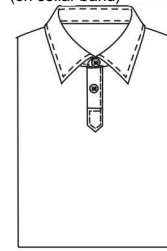
518A Hidden front polo shirt with one button



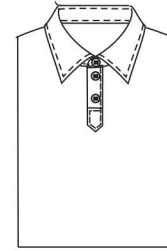
520A Hidden front pull-over shirt with 3 buttons



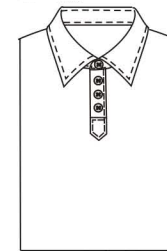
519A Hidden front pull-over shirt with 2 buttons



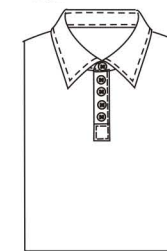
515A One Button Placket Slip Over



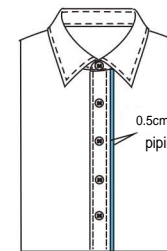
516A Two Button Placket Slip Over



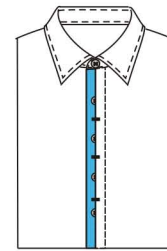
517A Three button placket slip over, the last button is 8.5cm above placket rooftop (not including collar band button)



522A Polo shirt, four buttons

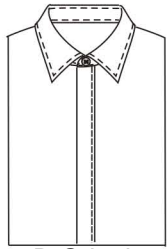


530M 0.5cm contrast piping on left placket (placket width do not contain piping), customer appoint piping

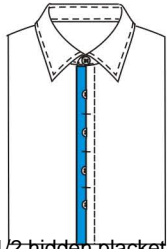


531Y 0.6cm bartack between front buttonholes

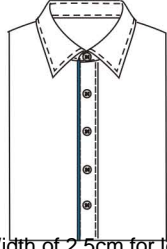
## Placket Style



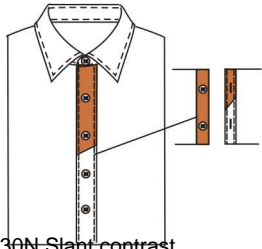
520D Gripping hidden button front



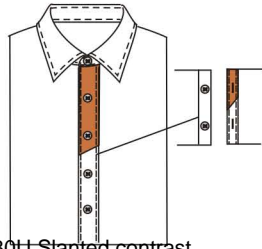
5555 1/2 hidden placket, 1/2 hidden placket contrast, customer appointed



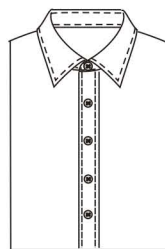
531U Width of 2.5cm for left placket, right included side with 1cm contrast piping stripe (3.5cm width for placket)



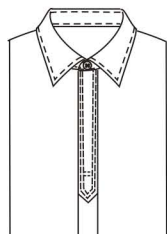
530N Slant contrast fabric between second and third Front button, 3.5cm width contrast fabric on right placket



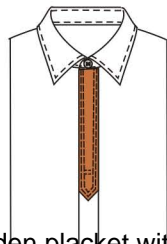
530U Slanted contrast joint for the part between the last second and third button, contrast face for placket



52C3 Double valgus placket, with 0.15cm pic stitch



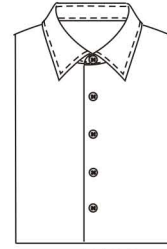
52G8 Hidden placket with extender patch, with double stitch (0.1cm+0.6cm), double seal, patch position to the middle of third and fourth button (not including collar band button)



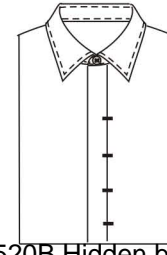
5937 Hidden placket with extender patch, with double stitch (0.1cm+0.6cm), double seal, patch position to the middle of third and fourth button (not including collar band button)

## Placket Style

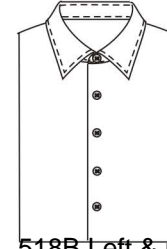
2



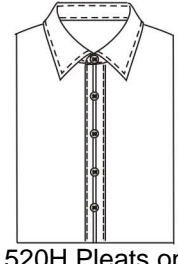
5100 Plain front



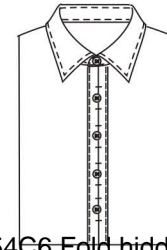
520B Hidden button roll outward and knot



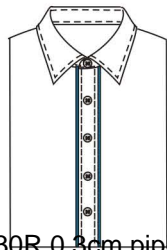
518B Left & right plain front



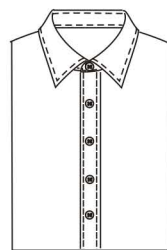
520H Pleats on placket front



54C6 Fold hidden placket, have a 0.6cm horizontal knot on the top and below for every button



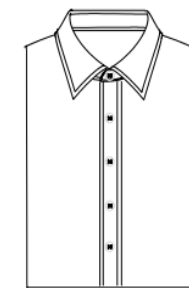
530R 0.3cm piping on placket (placket includes piping stripe), customer supplied piping



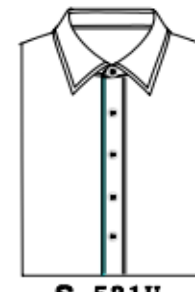
5101 Placket



**5F93**  
gripping hidden placket; the 1/3 placket with contrast fabric-customer appointed



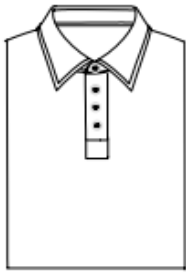
**Δ5101**  
Placket style: Placket



**S-531U**  
left placket width 2.5cm, 1cm piping on the right (placket width 3.5cm, piping width 4cm)



**520C**  
outer folded placket with knots of 3cm top & 3.7cm bottom with appointed fabric-



**5AB6**

polo shirt, three buttons  
(not include button on collar band)



**5045**

Jonny slip over  
Placket with two button  
The last button is 8.5cm  
away from slip over



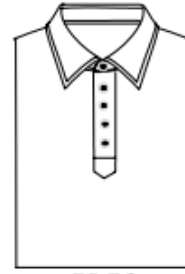
**5A92**

polo shirt, one button  
(not include button on collar band)



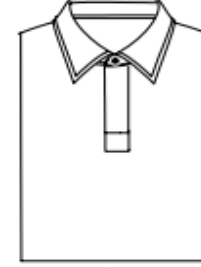
**51B1**

Hidden placket polo shirt  
with 3 buttons,3.5cm distance  
between 1st button and collar band  
bottom,following 6cm(placket width 25cm,  
not including collarband button)



**5D52**

Four Button Placket Slip Over  
8.5cm distance between last button  
and extension  
(not including collarband button)



**51B0**

Hidden placket polo shirt  
with 4 buttons,3.5cm distance  
between 1st button and collar band bottom  
following 6cm(placket width 31cm,  
not including collarband button)

Front style



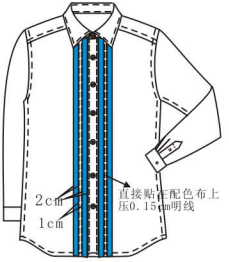
5D64:Plain front+joint pad, between the fifth and sixth button,other hidden placket(not including collarband button)



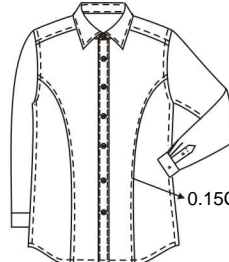
5F50:Plain front+joint pad, between the fourth and fifth button,other hidden placket(not including collarband button)



S-531S  
S-532B  
front style:0.3cm contrast in shoulder



S-530D  
front style:front pieces with 5cm contrast fabric and 1cm piping,appointed contrast fabric and piping



S-531V  
Front style:front piece knife back cut



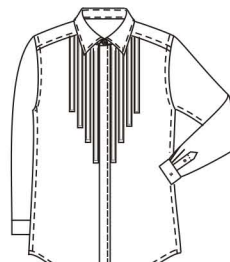
S-530E  
front style:V stitching



△S-530X  
Front style:Normal



S-530A  
Front style:Accordion pleats front with pleated patch (13 0.7cm width pleat each side)

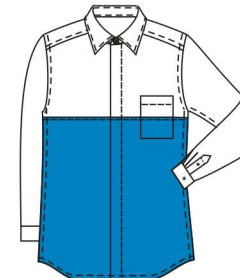


S-530C  
Front style:Front with vertical decoration strips

Front style



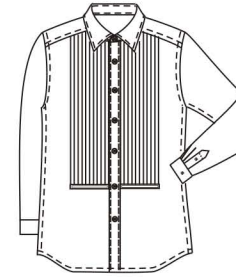
S-530B  
Front style:Front U shap, 13 pleat of 0.7cm for each side,left front foid



5B44:front style:add contrast on front,parallel with 1/2 pocket



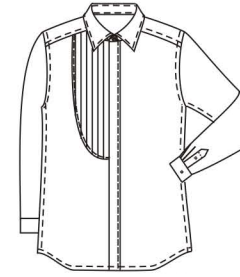
5B95--Cuff top stitch:Short sleeve Plain top stitch 2.5cm



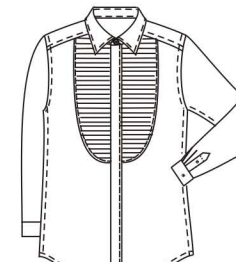
5124-Front style:tuxedo front 13 0.7cm pleat for each side



5039-Front style:Front U shap, 6 pleat of 1.3cm for each side



5040-Front style:Semi-U shape patch with six pleats (each pleat 1.3cm width) on right front yoke



5B33-Front U shape patch with horizontal pleats, to the 4th button<00FF>(not including collarband button), fly's fourth button(not counting the collar button), 1cm width 0.7cm width pleats, 0.6cm pleat distance,with piping



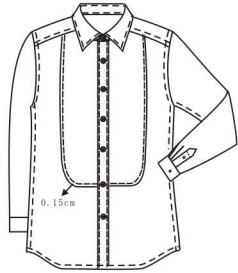
5B26-front piece tuxedo patch with horizontal pleats, to front fly's fourth button(not counting the collar button), 1cm width pleats, 0.4cm pleat distance,with piping



5B36-add triangle cloth on front shoulder, customer appointed fabric-



### Front style



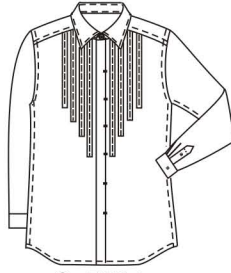
S-5108

Front style:Tuxedo patch (left and right patch)



S-513A

Front style:front piece with triangle patched fabrics, 0.1cm top stitch



S-530J

Front style:add 3cm fabric to the front piece, fabric cut slantly



S-530H

front style:10cm contrast fabric on left and right,customer appoint contrast fabric



S-530W

Front style:0.75 cm single pleats on each side with 0.6cm top stitch around the pleat

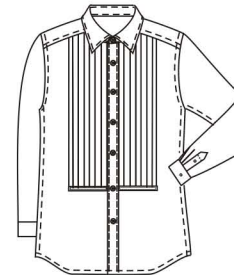


S-530S

Front style:a pleat on both right and left front panel,1.3cm pleat,distanc between two pleat is 1.2cm, tie a knot at the second button



5124-Front style:tuxedo front 13 0.7cm pleat for each side



5119-Front style:Two placket front w/pleated patch yseven 1.3cm width pleats each side)



S-531X

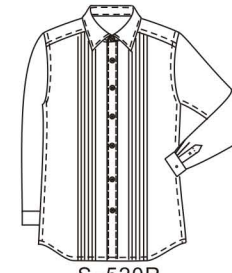
Front style:Tuxedo front patch(to bottom)

### Front style



S-530Y

Front style:Inner plain front edge with 0.6cm stitching



S-520R

pinch 6 pleats in front,the first pleat 8cm to placket,pleats width is 0.7cm with 0.6cm distance,



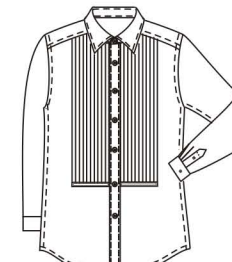
S-530K

Front style:double-deck lace both right and left front panel,



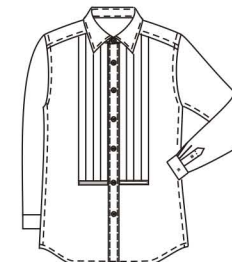
S-530L

left placket with contrast fabric:U patch contrast only for gripping hidden placket



S-5110

Front style:tuxedo front 10 0.7cm pleat for each side

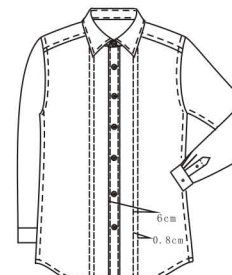


5118-Front style:tuxedo front 4 2.5cm pleat for each side



S-530F

Front style:add fabric to front piece



S-530G

front style:2 lines of pick stitches on each side



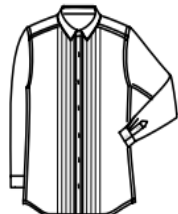
S-520S

Front style:Placket front w/pleated patch yten 0.7cm width pleats each side,pleats to bottom)



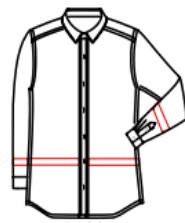
5FA2

Above the left breast pocket add 6 cm wide color cloth



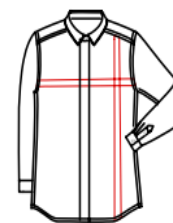
56C8

six 0.7cm fold on left and right front to the bottom of the front



5F61

4cm width color fabric on sleeve and bottom, 10cm upper the bottom



5677 add 6cm contrast from 8.5cm distance both on left and right placket



5934

L&R front pockets above the patch cloth, The opening is not sealed Fold width 4cm 5 line edge pick with 3cm stitch

5676 add 6cm customer appointed fabric between and below 1st and 2nd button of placket



5D82

add 7cm contrast fabric on right front placket



5763

5cm from R and L break contrast stitch



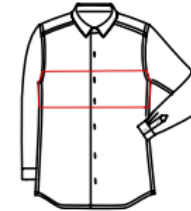
5FB0

12.5cm distance of left side to front contrast with 12.5cm distance of right side to front, stitch fabric



5F42

Front with double darts



5G28

2cm under the 2nd button of front and 3cm under the 3rd button contrast stitch



5F92

add contrast around bottom part of 1/2 suit length customer appointed fabric



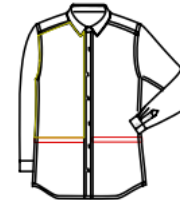
5B81

left break contrast and upper latitude cutting, customer appointed fabric



5FB1

add contrast on right front placket, 1.5cm exposed contrast fabric-



5673 add 4cm contrast between and below the last 2nd and last 3rd button both on left and right placket, customer appointed fabric-



5670

one 1.5cm color piping on right front, space 2cm and one more 2.5cm color piping

5675 with contrast between last 2nd and last 3rd button of right placket, top part use customer appointed contrast-



5F99

Tuxedo front 10 0.7cm pleat for each sideyto placket's penultimate button,0.7cm width pleats, 0.6cm pleat distancey



5F94

flap collar handmade



5060

Small U shape front patch, one patch on each side extends to the placement between 4th button and 5th button



5AM4

Tuxedo front patch(to bottom) patch width 5cm



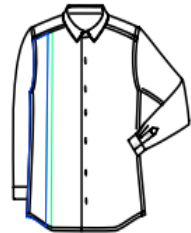
5FA0

Front piece add triangular patch the taping tip is 4.5cm below half of the pocket opening with 0.1 cm stich

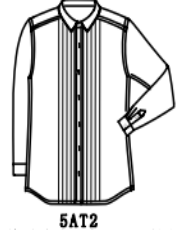


5AW5

Pentagon front patch to the placement between 4th button and 5th button not including collarband button right fly pressing from both sides

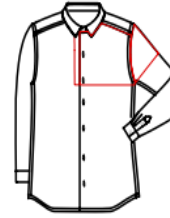


5672 add contrast 10cm distance from side seam on right placket contrast fabric 2.5cm- 5674 add 10cm contrast on side seam of right front placket,customer appointed fabric



5AT2

8 pleats on left and right panels 0.7cm width, apart 0.6cm



5671 on the position of connection of left front and becip, upper contrast stich,2cm stich from 1.5cm distance to front stich fabric 5678 add contrast fabric from left sleeve cuff to bicep,customer appointed fabric-



513A

front piece with triangle patched fabrics, 0.1cm top stich



5749

Front style:tuxedo front 16 0.7cm pleat for each side, length to the last button

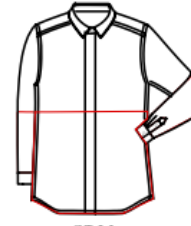


5906 Front with trapezoid shape joint lap seam on side seams 5907 with some contrast on front in inverted trapezoid



5898

2.5cm width break stich fabric on the middle of 1st and 2nd button,0.1cm stich on colored fabric



5F60

half bottom of cloth length around contrast stich customer appointed stich



5064

Rectangle patch, one patch on each side extends to the placement between 4th button and 5th button



5065

Front piece tuxedo patch with 6 horizontal pleats 8.5cm between the first pleat and bottom, 0.7cm width pleats 0.6cm pleat distance



5609

Tuxedo front patch to bottom 8.5cm from the edge patch width 5cm



5061

Square tuxedo patch one patch on each side extends to the placement between 4th button and 5th button



5062

U shape front patch one patch on each side extends to the placement between last 2nd buttons and 3rd buttons.



5AX5

Tuxedo front 12 1.2cm pleat for each side to placket's penultimate button 1.2cm width pleats 0.8cm pleat distance



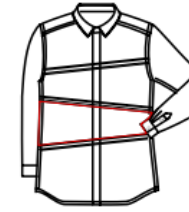
5AJ4

two placket front pleated patch (three 1.3cm width pleats each side)



5731

add contrast from shoulder seam to waist length for front placket 5B38 Front with 3 3.5cm patches using fabric 5B37 front waist with contrast fabric



5B38 Front with 3 3.5cm patches using fabric 5B37 front waist with contrast fabric



5840

triangle pocket shape on the 1.8cm distance of the middle of 3rd and 4th button, customer appointed wire



5668

Front pieces 4 cuff broken with 0.3cm top stitch



56D9

The first four pieces were split and spliced side piece splicing on the figure of eight pressure 0.3cm open line



53C3

U shape contrast patch on left shoulder



57R6

Plain placket front with 0.3cm top stitch



5AD7

Front piece with triangle patched fabrics, 0.1cm top stitch front piece knife back cut 0.15 top stitch



56H3

L&R shoulder stick U - shaped color paste cloth



53C1

U shape contrast patch on right shoulder



5A20

shirt front V shape cutting



5AE6

tuxedo front with 23 pleat 0.7cm both side

# Placket width

510A Placket width 2.0cm 510E Placket width 3.5cm 510M Placket width 4.5cm

△510B Placket width 2.5cm 510F Placket width 3.8cm

510C Placket width 3.0cm 510K Placket width 4.0cm

510D Placket width 3.2cm 510L Placket width 4.2cm

# Placket buttons quantity



△510P  
placket buttons quantity:  
7 buttons for placket  
including collar band button



510G  
placket buttons quantity:  
front placket with 8 buttons  
include collar band button

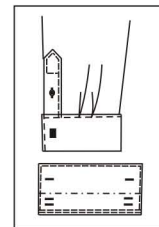


510Q  
placket buttons quantity:  
placket 10 buttons  
including collar band buttons



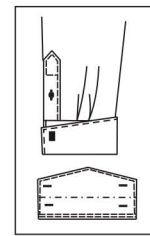
510H  
placket buttons quantity:  
placket 9 buttons  
including collar band buttons

# Cuff



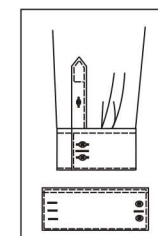
5467

Cuff:French square  
cuff with 6 buttonholes



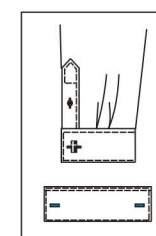
5454

Cuff:Triangle French  
cuff four buttonholes



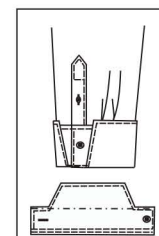
S-545N

Cuff:2BUTTON+1CONV



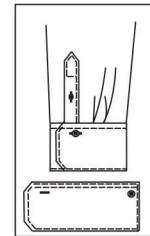
S-5406

Cuff:Single square  
french cuff two buttonholes



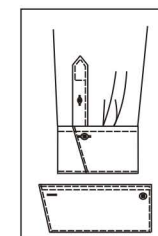
545P

Cuff:One Button Fold



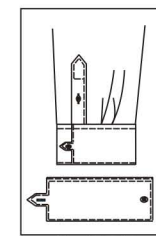
5417

Cuff:Octagonal cuff



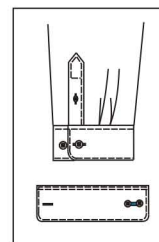
S-5418

Cuff:Angled cuff



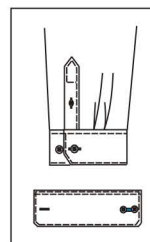
S-545I

Cuff:Square cuff w/tab one button & one  
buttonholes tab on gusset side, cuff  
stitching 0.15cm, the small cuff flower  
without inner folding, buttoning to side 4-4.5



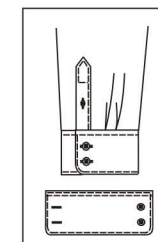
5783

Cuff:Rounded cuff w/ two button  
&two buttonholes, two buttons  
on the side of buttonhole of  
the smaller sleeve placket



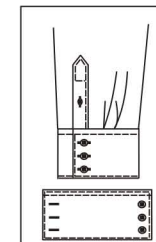
5786

Cuff:Hexagon cuff w/ two button  
& two buttonhole,two buttons on  
the side of buttonhole of  
the smaller sleeve placket



S-5412

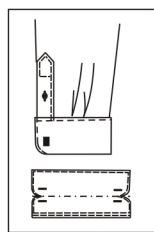
Cuff:Rounded cuff  
two buttons&two  
buttonholes



S-5403

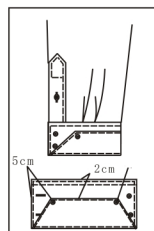
Cuff:Square cuff  
three buttons &  
three buttonholes

# Cuff



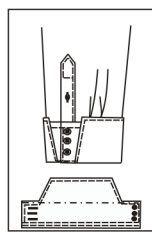
5578

Cuff:French cuff middle double round four buttonholes



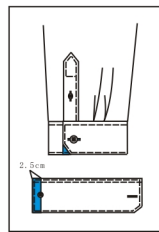
S-54B5

sleeve style:  
french cuff  
contrast form-



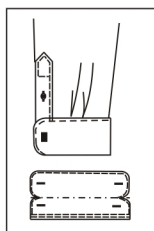
545K

Cuff:Three  
Button Fold



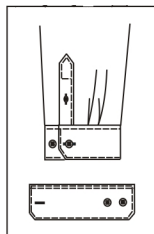
5570

sleeve style:hexagonal  
cuff,4cm combination,  
customer appointed-



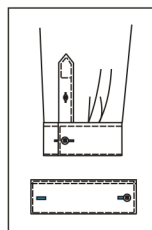
545T

Cuff:French three  
rounded cuff



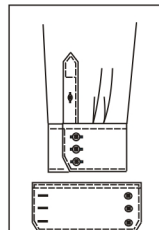
S-5431

Cuff:Hexagon cuff  
two buttons &  
one buttonholes



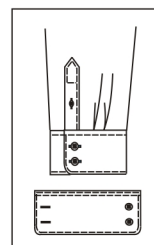
S-5404

Cuff:Square cuff  
one button &two  
buttonhole



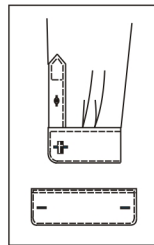
S-5433

Cuff:Hexagon cuff  
three buttons &  
three buttonholes



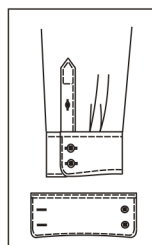
S-5415

Cuff:Small rounded  
cuff two buttons&two  
buttonholes



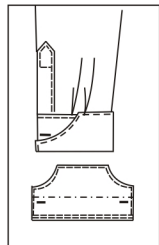
S-5409

Cuff:Single rounded  
french cuff two  
buttonholes



S-545J

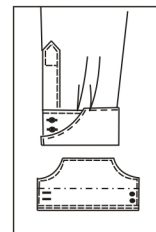
Cuff:Arc single cuff



53A4

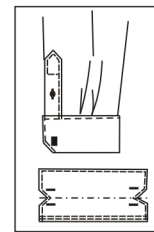
Cuff:curved fold  
french forward link

# Cuff



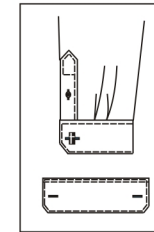
53A2

Cuff:Customer name embroidery  
one the fabric above the left  
inside pocket,front level to the pocket  
buttonholing at the 1/3  
opening only to Inner facing B and F  
position of folding



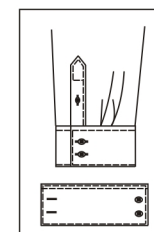
58A0

Cuff:French cuff double  
hexagon four buttonholes,



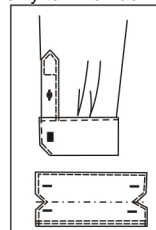
S-5408

Cuff:Single square  
french cuff two  
buttonholes



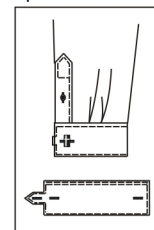
S-5402

Cuff:Square cuff two  
buttons &two buttonholes



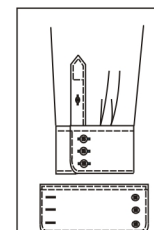
5459

Cuff:French cuff  
double hexagon  
four buttonholes



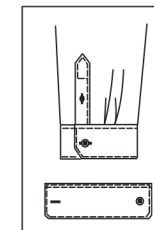
S-5450

Cuff:Square  
cuff w/tab three  
buttonholes



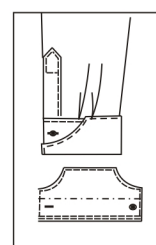
S-5416

Cuff:Small rounded  
cuff three buttons&  
three buttonholes



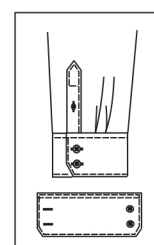
S-5430

Cuff:Hexagon cuff  
one button & one  
buttonhole



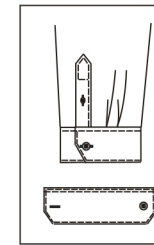
53A1

Cuff:Arc shaped  
french cuff with  
1 button & buttonhole



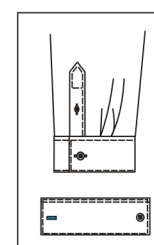
S-5432

Cuff:Hexagon cuff  
two buttons &  
two buttonholes



S-5434

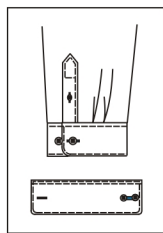
Cuff:Large hexagon  
cuff one button  
& buttonhole



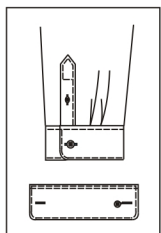
S-5400

Cuff:Square cuff  
one button &  
one buttonhole

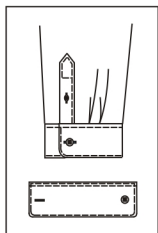
# Cuff style



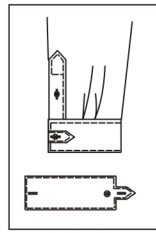
5784  
Small rounded cuff  
w/two button & two buttonholes,  
two buttons on the side of buttonhole  
of the smaller sleeve placket



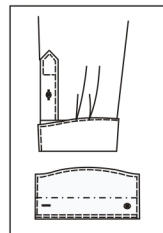
S-54B6  
Rounded cuff  
with two  
buttonholes  
and one button



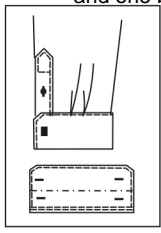
S-5420  
Large rounded cuff  
one button & one  
buttonhole



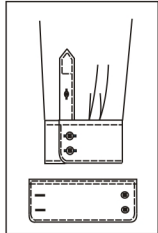
S-5442  
French square cuff  
w/tab one button  
& two buttonhole



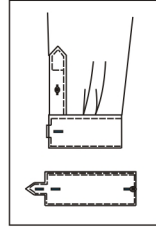
5426  
French arch cuff  
one button & one buttonhole



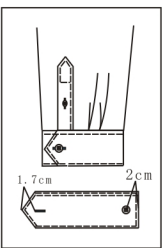
5452  
Hexagon French cuff  
four buttonholes



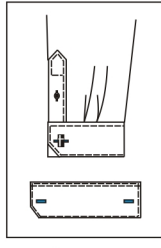
S-5422  
Large rounded cuff  
two buttons & two buttonholes



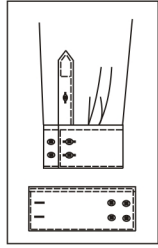
S-543A  
Square cuff w/tab  
three buttonholes  
one button



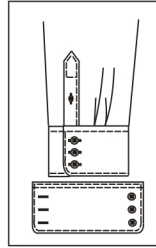
S-5440  
Pointed cuff one  
button & one buttonhole



S-5427  
French triangle  
cutout cuff

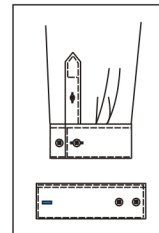


S-54C1  
Straight cuff with two  
buttonholes and four buttons

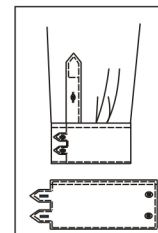


S-5413  
Rounded cuff three  
buttons & three  
buttonholes

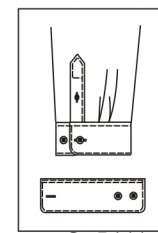
# Cuff style



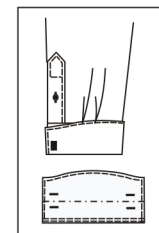
S-5401  
Square cuff two buttons  
& one buttonhole



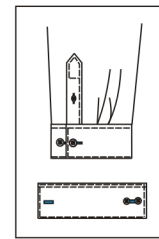
S-5443  
Square cuff w/ two tab  
two button & two  
buttonholes



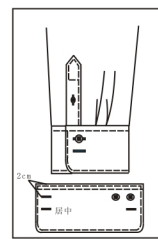
S-5411  
Rounded cuff two  
buttons & one  
buttonhole



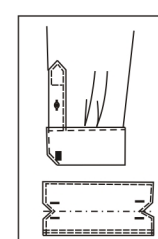
545H  
Semicircle French cuff  
four buttonholes, buttonhole  
is on 1/3 part of the cuffs



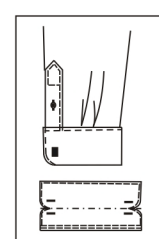
5787  
Square cuff w/ two button  
& two buttonholes, two buttons  
on the side of buttonhole of  
the smaller sleeve placket



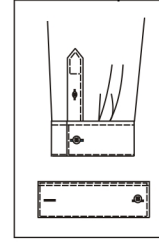
S-5436  
Single round french cuff  
two buttons with  
three buttonholes



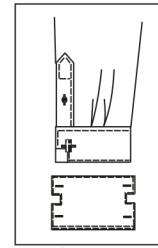
545E  
French cuff double  
hexagon four buttonholes



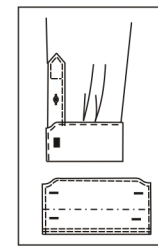
545F  
French cuff  
double round  
four buttonholes



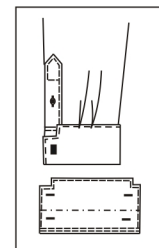
S-5405  
Square cuff  
one button &  
two buttonhole



S-5428  
Window Square  
French Cuff

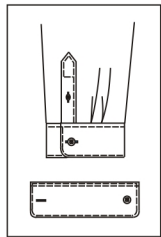


5458  
Small arc  
French cuff  
four buttonholes



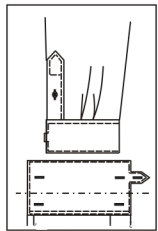
545R  
French square cutout cuff

# Cuff Style



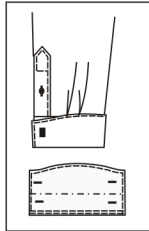
△S-5410

Rounded cuff one button&one buttonhole



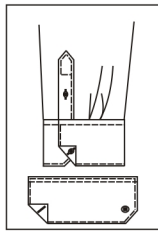
S-545A

French cuff with tab five buttonholes



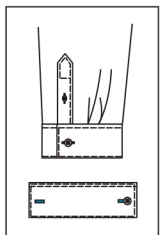
5407

Single semicircle French cuff four buttonholes



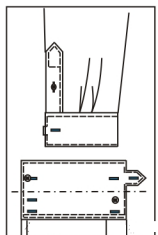
S-5419

Hexagon folded cuff



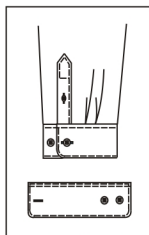
S-5429

Convertible square cuff



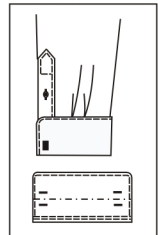
S-545W

French cuff with tab two buttons & six buttonholes



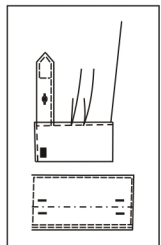
S-5421

Large rounded cuff two buttons & one buttonhole



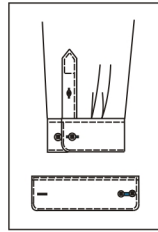
545G

Rounded French cuff four buttonholes, buttonhole is on 1/3 part of the cuffs



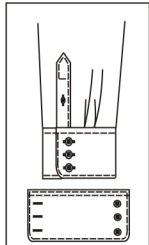
545D

Square French cuff four buttonholes, buttonhole is on 1/3 part of the cuffs



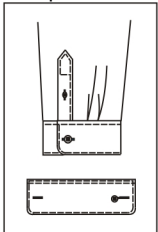
5785

Large rounded cuff w/ two button & two buttonholes, two buttons on the side of buttonhole of the smaller sleeve placket



S-5423

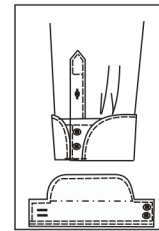
Large rounded cuff three buttons & three buttonholes



S-545M

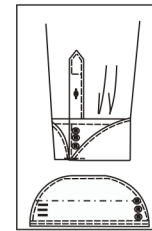
Rounded cuff one button & two buttonholes with button inside cuff

# Cuff Style



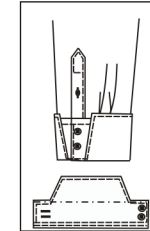
545C

Single semicircle French cuff two buttons & two buttonholes



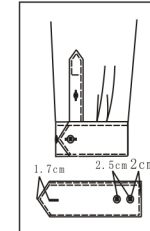
546Z

Semicircle French cuff three buttons & three buttonholes



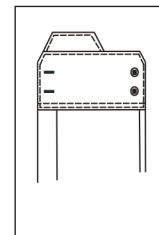
5453

Trapezoid French cuff two buttons & two buttonholes



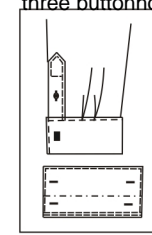
S-5441

Pointed cuff two button & one buttonhole, from buttonhole to the point 1.5cm, buttoning to side 2.3cm



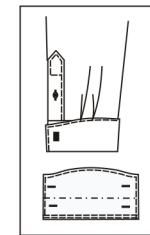
545X

Contrast



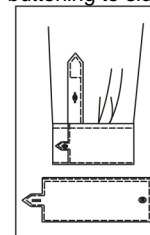
5455

Square French cuff four buttonholes



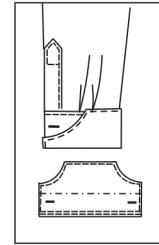
5456

Large arc French cuff four buttonholes



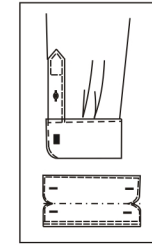
S-545I

Square cuff w/tab one button & one buttonholes (tab on gusset side, cuff stitching 0.15cm, the small cuff flower without inner folding, buttoning to side 4-4.5)



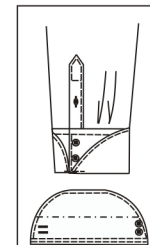
53A3

Curved fold french cuff band link



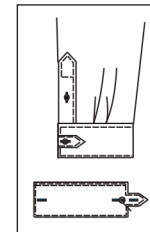
5457

French cuff middle double round four buttonholes



545B

Semicircle French cuff two buttons & two buttonholes

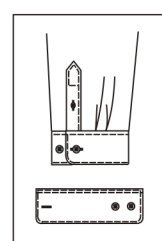


S-545Y

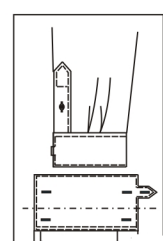
French cuff with tab one buttons & three buttonholes



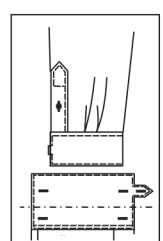
Cuff Style



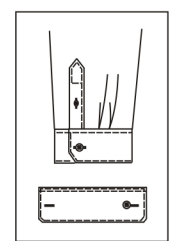
S-5411  
Rounded cuff two buttons & one buttonhole



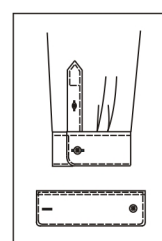
59B0  
French cuff with tab five buttonholes



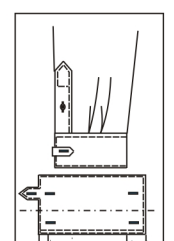
59A0  
French cuff with tab five buttonholes (cuff top stitch 0.6cm)



S-540B  
Hexagon cuff one button & two buttonholes

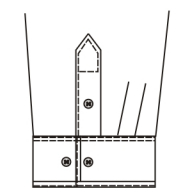


S-5414  
Small rounded cuff one button & one buttonhole

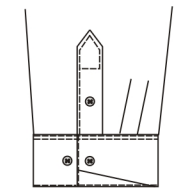


S-545L  
Straight French with cuff tab, tab on gusset side

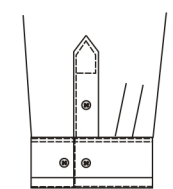
Cuff Style



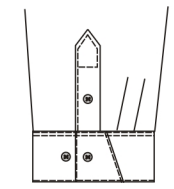
547Q  
v'cuff 1CM piping stick on three side of cuff customer appoint the piping



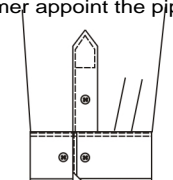
547P  
U cuff outside slant joint (0.15 top stitch)



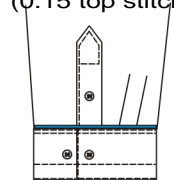
547H  
cuff 2cm cuff outside (0.15 top stitch cuff)



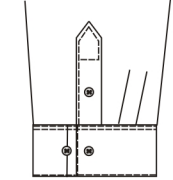
547G  
cuff P style four contrast placket on cuff (gusset side)



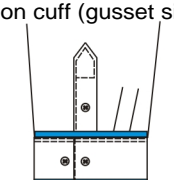
501C  
c edge piping with 0.4cm triangle point (cuff stitching 0.15cm)



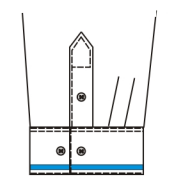
547S  
X1 cuff cuff with 0.3cm piping, customer specified fabric



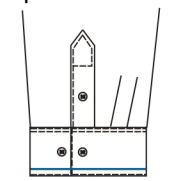
547M  
s cuff with 2.5cm body fabric on small cuff placket side



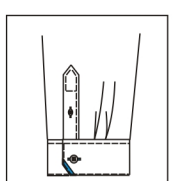
5922  
0.5cm piping join on the outside of the cuff



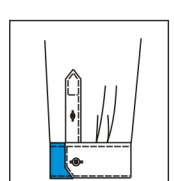
564M  
the cuff attached 1.5 cm piping



564K  
1cm contrast on cuff

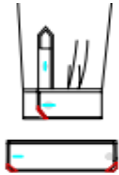


5568  
hexagon cuff hexagon 1cm facing edge



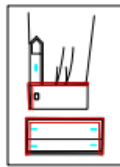
5569  
cuff with 1/2 slant angle patch (patch in the side of small sleeve placket)

# Cuff Special Style



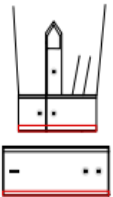
**59D8**

Hexagonal sleeve head hexagonal edge bag 0.4 diagonal cut color matching

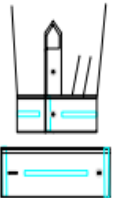


**5056**

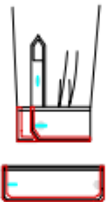
0.4cm binding for french square cuff customer appointed binding fabric -



55H4 Outer cuff bag 0.6cm color piping width 4cm (diagonal cut)

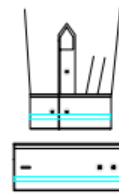


55D1 0.6cm stripe on the middle of cuff , 5cm from both side , stripe fabric customer appointed-

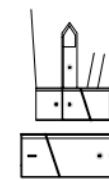


**5C99**

Hexagonal cuff bag 0.4 side band Angle

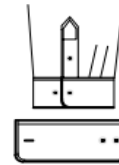
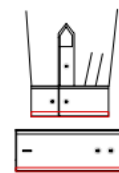


5874 add color cloth piping 2cm from cuff, customer appointed piping

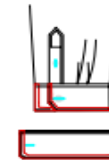


P1 cuff, square patch on cuff

5932 M1 cuff, add 1cm piping on outside cuff (no contrast for piping)

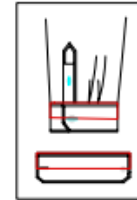


54H9 outer sleeve is clamped with 0.2 piping no color slash the seam 3cm wide with cotton rope



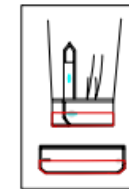
**53H3**

Hexagonal cuff bag with 1cm edge with fabric



**5B23**

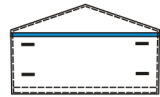
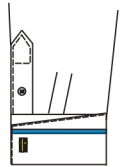
Customer appointed fabric for upper 1/2 cuff-



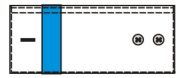
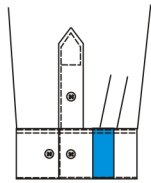
**5B24**

Customer appointed fabric for lower 1/2 cuff-

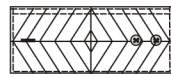
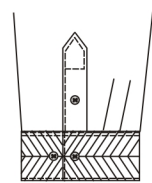
Cuff Special Style



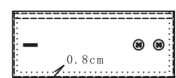
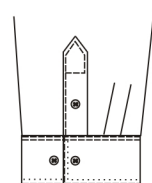
501G  
g' cuff one horizontal piping attaching on the cuff



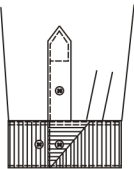
501F  
f' cuff 2.5cm patch in the cuff



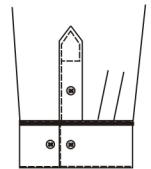
501B  
b cuff with + split joint



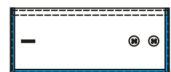
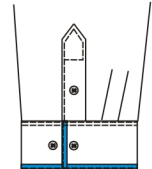
501D  
D cuff with single pick stitch (top stitch 0.15)



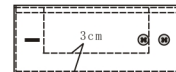
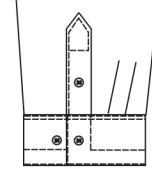
501A  
A style cuff large sleeve placket with bevel stitching



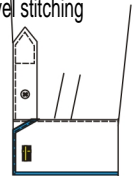
547F  
o' cuff matching color 0.8cm piping in the middle of cuff



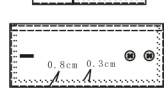
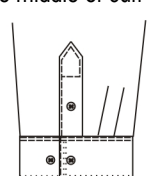
501J  
:j' cuff cuff covering 0.6cm piping (cuff top stitch 0.15)



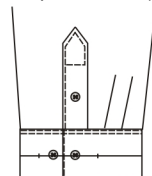
5B11  
cuff with double top stitch, the first to cuff 0.5cm, the second to cuff 3cm



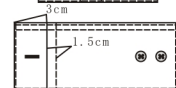
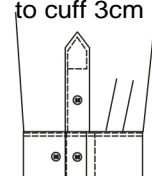
501K  
k french cuff edge piping



501E  
e' cuff double pick stitch

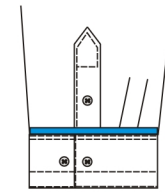


564L  
:cuff band connection with hidden ( shape pleat and bar tack)

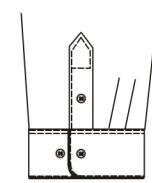


547R  
cuff W shape with cuff surface 1.5cm pleat

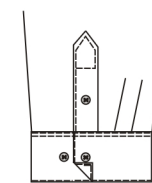
Cuff Special Style



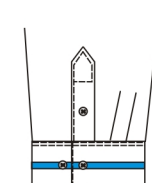
532D  
X1'cuff cuff with 0.6cm piping



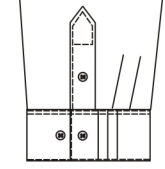
547Z  
cuff edge



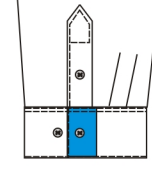
547L r' cuff folded angle bartack on the big side of sleeve pocket



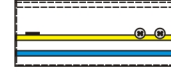
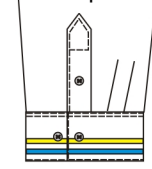
547E n' cuff 1.2cm piping in the middle of cuff, the fabric of piping guest specified



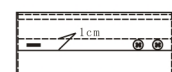
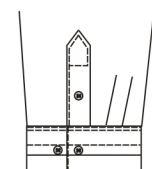
501L cuff 1 shape with three 0.5cm pleat



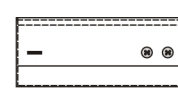
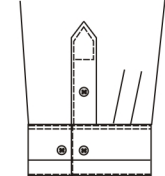
564G  
2.5cm contrast on cuff



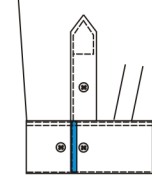
501H  
h' cuff two horizontal pipings attaching on the cuff



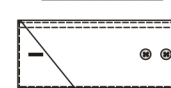
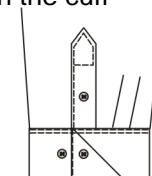
547V  
a1 cuff, 1CM wrinkle on the middle of cuff, button hole in the middle of wrinkle



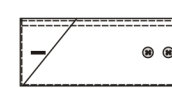
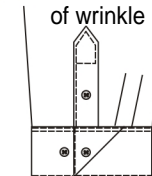
547T  
Y'cuff 4cm above cuff broken, stitch style 2, latitude cut (0.15 top stitch on cuff)



547Y  
two welt on cuff edge (0.15 top stitch on cuff)

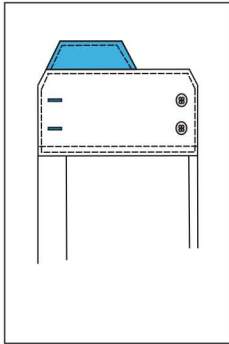


547U  
z cuff with three split joint (0.15cm top stitch on cuff)



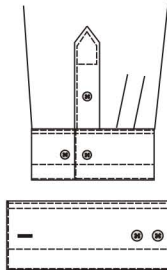
547W  
b1 cuff with the 4th split joint

## Special cuff style



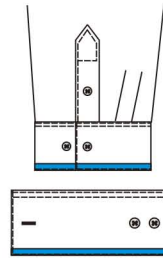
5599

Hexagon cuff  
contrast fabric  
for out folded part



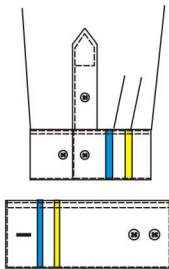
547N

t cuff with 3cm  
single top stitch  
on outter cuff



547D

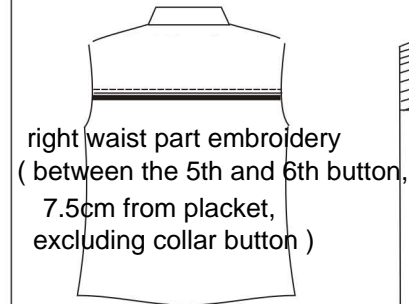
1cm contrast on cuff--



5011

i cuff two vertical pipings  
attatching on the cuff,  
the fabric of piping guest specified

## Yoke style

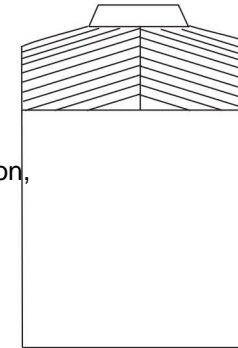


right waist part embroidery  
( between the 5th and 6th button,  
7.5cm from placket,  
excluding collar button )

5147

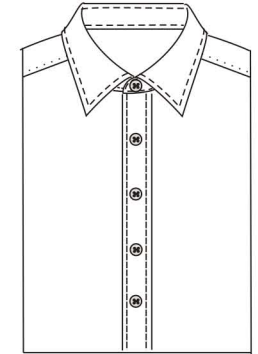
532C

0.6cm piping on back yoke



5171

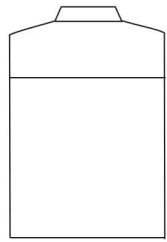
Split yoke



5912

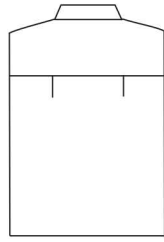
front shoulder seam  
stitching 0.15cm(handmade stitching)

## Back Style



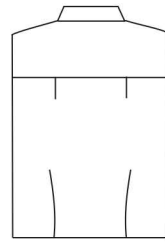
△S-5140

no pleat and no dart



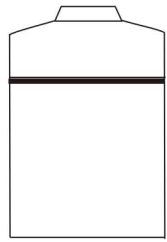
5141

Side pleats



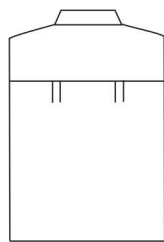
S-5152

double pleats with darts



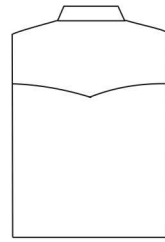
S-5147

right waist part embroidery  
( between the 5th and 6th button  
7.5cm from placket  
excluding collar button )



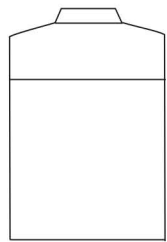
S-5148

Shoulder Pleats  
(Double)



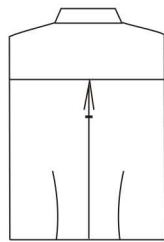
S-5149

Triangle yoke



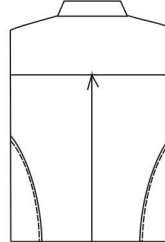
S-5170

Normal yoke



S-5153

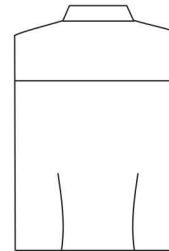
Center Box Pleat  
from top to bottom  
with double dart



5586

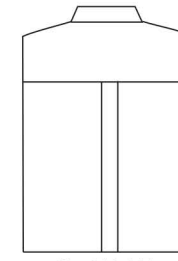
3 pcs splitting of back

## Back Style



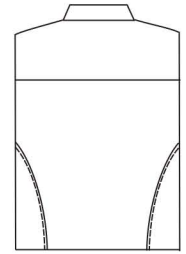
S-5144

no pleat with double darts



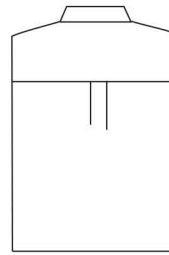
S-5145

Box pleats to bottom



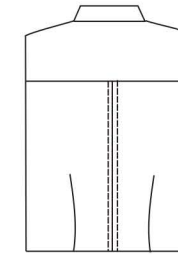
5586

3 pcs splitting of back

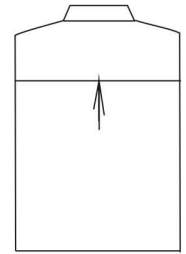


S-5143

Box pleats

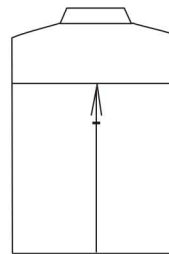


1cm center box pleat  
on both sides with double dart



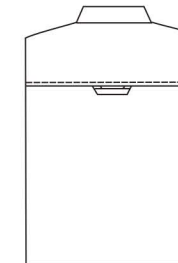
S-5142

Inverted box pleat



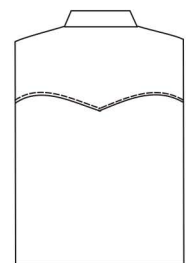
S-5150

Inverted box pleat  
from top to bottom  
top and bottom knot



5151

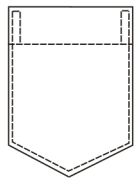
center back with tab  
(0.6cm\*5cm)



5782

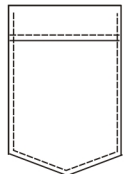
western yoke

## Pocket Style



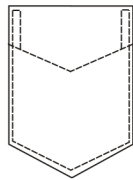
S-5300

Triangle pocket  
Straight pleat



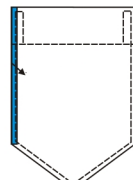
5301

Triangle pocket  
ornamental pleat



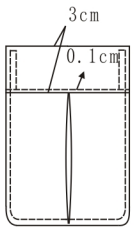
S-5302

Triangle pocket  
Triangle pleat



S-536D

customer request  
1cm width trim  
on the right side of pocket



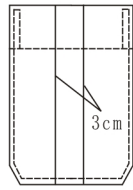
S-5316

Rounded hem pocket  
with inverted box pleat



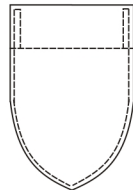
S-5310

Hexagon pocket  
Triangle pleat



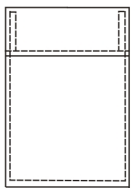
S-5306

hexagon pocket  
straight pleat  
with box pleat



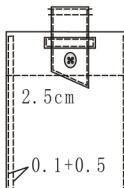
S-5317

heart shape pocket



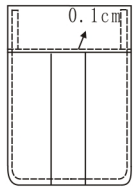
S-5344

Square pocket  
ornamental pleat



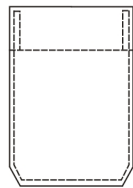
S-5304

Square pocket  
with loop



S-5315

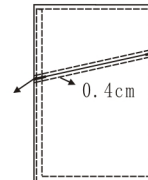
Rounded hem  
pocket with  
box pleat



S-5312

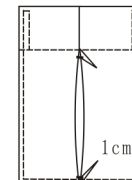
Hexagon pocket  
Straight pleat

## Pocket Style



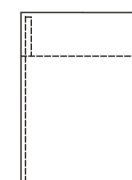
S-5319

Split square pocket



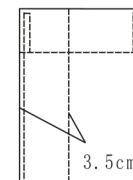
S-536F

upset box-pleat  
square pocket  
with Straight pleat



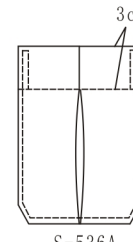
S-5340

Square pocket  
straight pleat



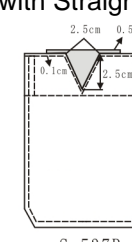
S-536G

Square pocket  
straight pleat



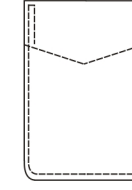
S-536A

Inverted box pleat  
Hexagon pocket  
Straight pleat



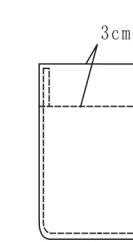
S-537R

inside of  
hexagonal contrast-



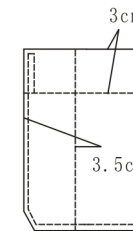
S-5325

Rounded pocket  
Triangle pleat



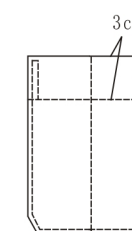
S-5323

Rounded pocket  
Straight pleat



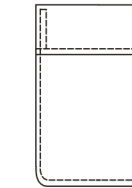
S-537T

Slanted flap



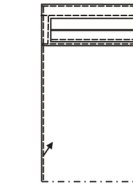
S-537U

Hexagon pocket  
with eyeglass pocket



5324

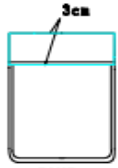
Rounded pocket  
Decorate pleat



S-5321

Square pocket  
with hidden pocket  
double besom

# pocket style



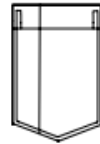
5AN7

rounded pocket clamped edge  
customer designating fabric  
for clamped edge-



5857

Tringgle pocket with stright  
flod add tringgle knot



5G20

Triangle pocket Straight  
pleat with pen pocket



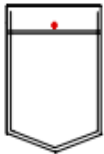
5732

Gripping triangle pocket  
gripping contrast  
customer appointed-



5948

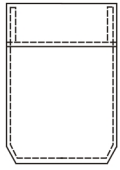
Triangle pocket Triangle pleat



5G44

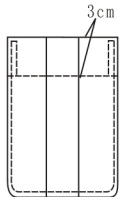
Triangle pocket with  
outside pleat

# pocket style



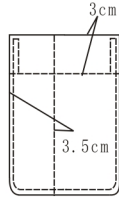
S-5311

Hexagon pocket  
ornamental pleat



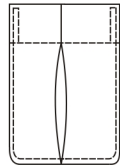
S-5329

Rounded pocket  
with box pleat



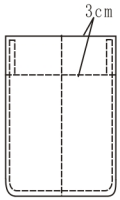
S-5337

Rounded pocket  
with pen pocket



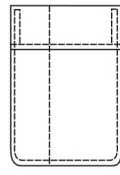
5326

upset box-pleat round pocket



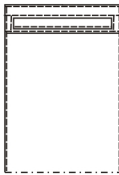
S-536B

Rounded pocket  
with eyeglass pocket



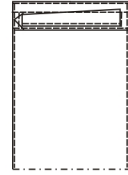
537V

Square pocket with  
hidden pocket



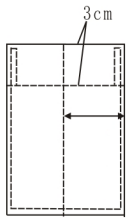
S-5320

Square pocket with  
hidden pocket besom



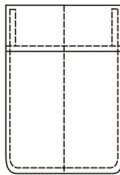
S-5318

Welt square pocket,  
hidden pocket  
(left 1.3cm and right 1cm)



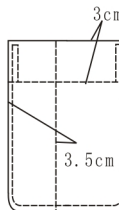
S-536H

Square pocket  
with eyeglass pocket



537W

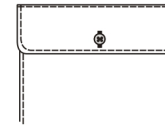
rounded pocket with  
decorating pleat and  
glasses pocket



S-5328

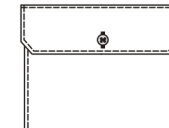
Rounded pocket with  
pen pocket.  
pen pocket 3.5cm width

# flap style



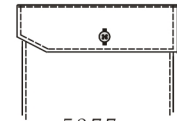
5374

Round flap with one button



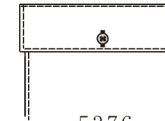
5372

Hexagonal flap  
with one button



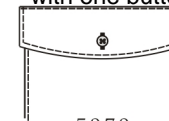
5377

Slanted flap



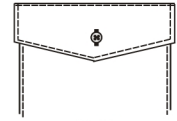
5376

Square flap with one button



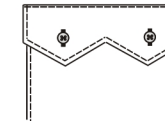
5373

Semicircle flap  
with one button



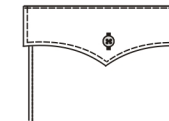
5375

Triangle flap  
with one button



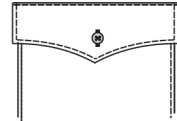
5378

double triangle flap  
with two buttons  
(edgefold 2cm)



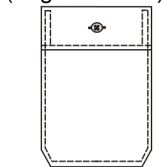
5379

Arched point flap  
with one button



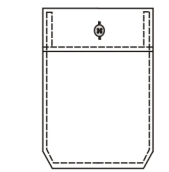
5381

small arch pointed flap,  
vertical buttonhole,  
button on the pocket  
(2cm pocket hem)



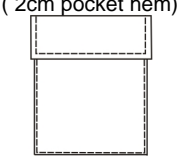
5371

horizontal buttonhole  
with button



5370

Vertical buttonhole with  
button on chest pocket mouth

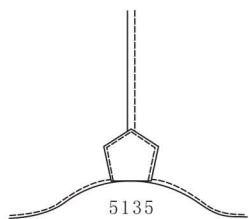


537S

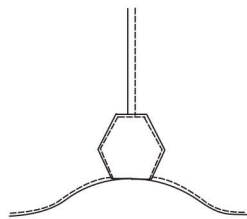
flap with no button



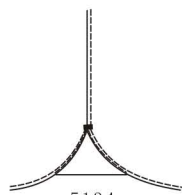
# Gusset



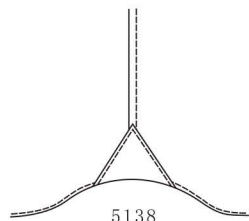
5135  
Pentagon gusset



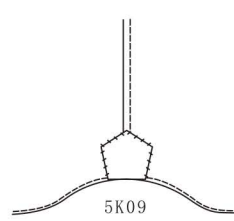
5133  
Hexagon gusset



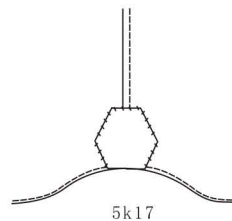
5134  
Triangle gusset



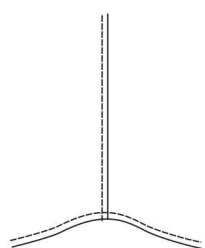
5138  
shirt bottom with customer offered gusset



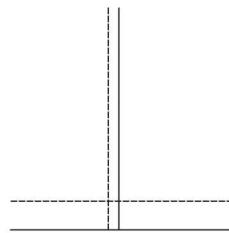
5K09  
pentagon gusset bottom



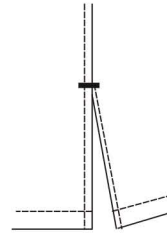
5k17  
bottom Hexagon patched



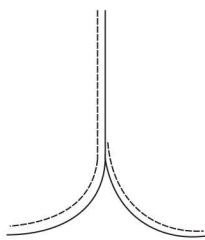
S-5120  
Normal rounded bottom



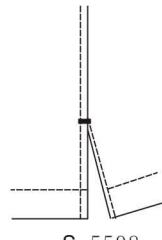
S-5130  
Normal square bottom



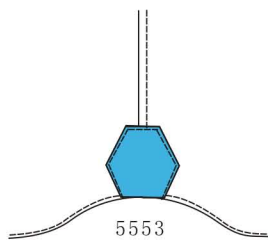
S-5131  
Straight side vents bottom 9.0cm



S-5132  
Large rounded bottom

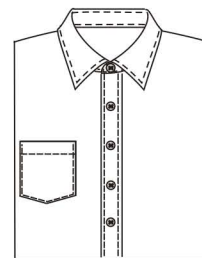


S-5598  
side vents 5cm of straight bottom

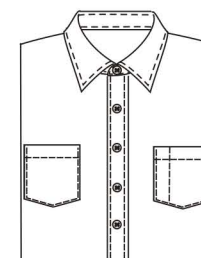


5553  
customer appoint shirt bottom gusset

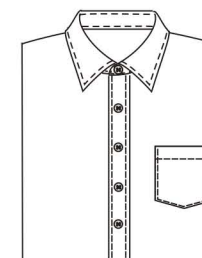
# pocket quantity



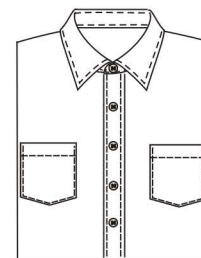
538B  
Pocket position:Right



5L72  
a pocket in each side



538A  
Pocket position:Left



538C  
Pocket position:Left & Right

# pocket size

5781 xs

5361 S (87-91cm)

537A M (92-96cm)

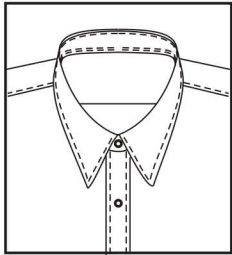
537B L (97-135cm)

537C XL (136-146cm)

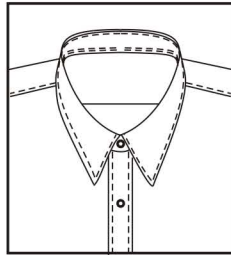
537D 2XL (147-157cm)

537E 3XL (158-170cm)

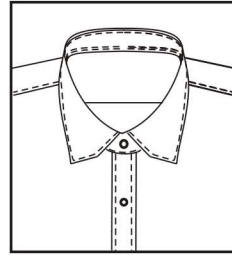
# collar style



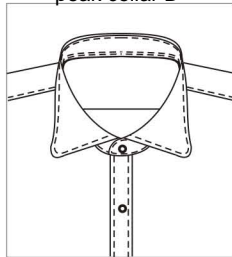
5L29  
peak collar D



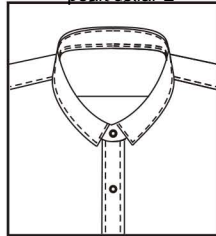
5L30  
peak collar E



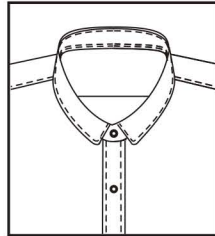
5L50  
hexagon E



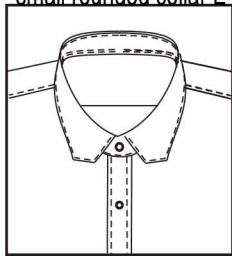
5L54  
small rounded collar E



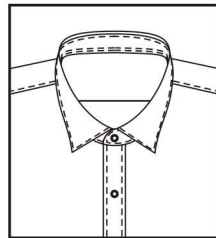
5I02  
RP-LZ-1#



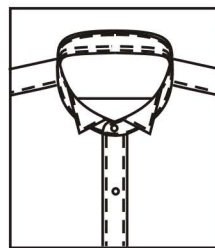
RP-LZ-1# round collar



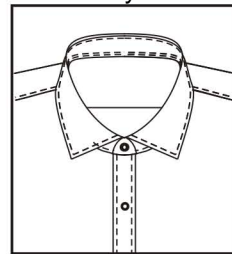
5I47  
C style



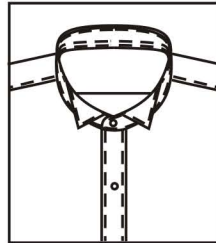
5I15  
2 #



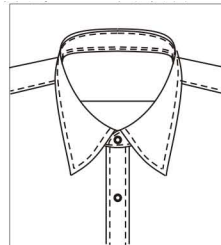
RP-LZ-3# wing collar



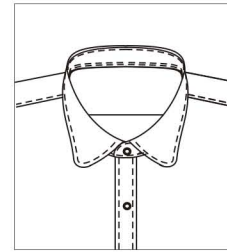
5AL7  
Small cut away collar H



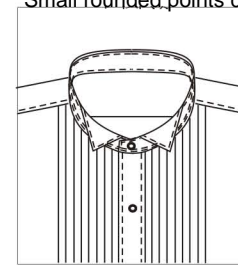
5I04  
RP-LZ-3# wing collar



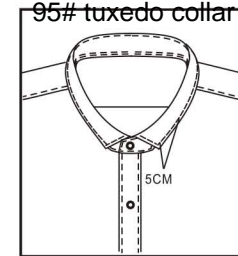
S-5230  
Middle arch collar



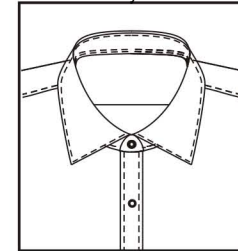
S-5240  
Small rounded points collar



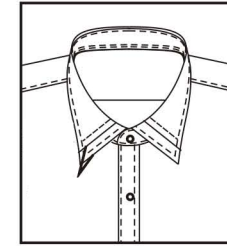
S-5260  
95# tuxedo collar



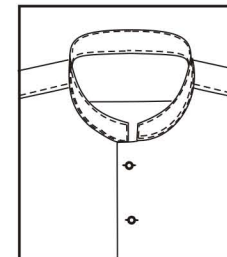
5L62  
RP-LZ-9 double layers band collar



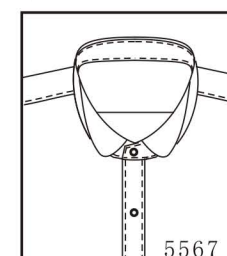
5AL9  
Large cut away collar H



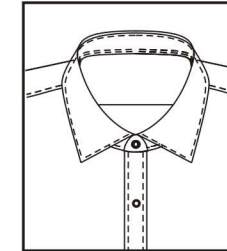
5L64 double ply collar, level  
inner ply with outside ply



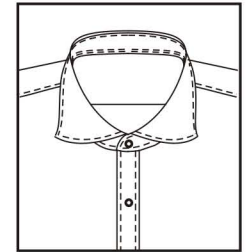
5L51  
Stand collar 1



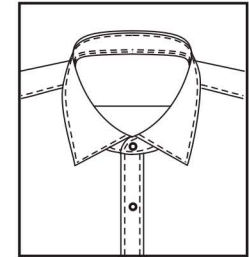
5567  
Tuxedo collar with round collar point



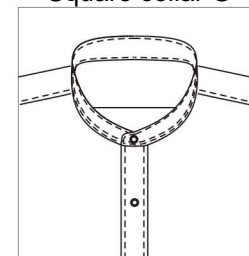
5AL8  
Middle cut away collar H



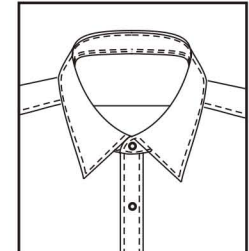
5588  
cut away arch collar



5L32  
Square collar G

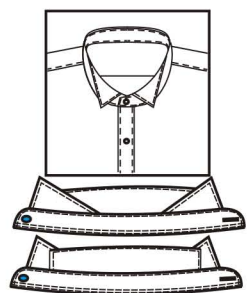


S-5250  
Band collar

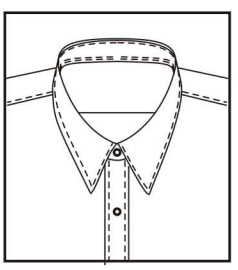


5AL6  
Large squared collar G

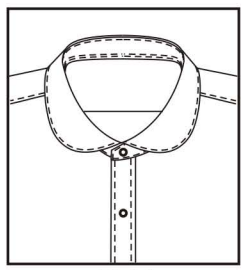
# Collar style



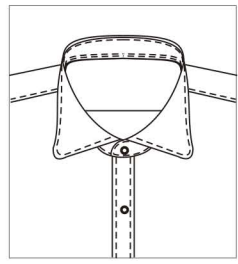
5L01 94# tuxedo collar



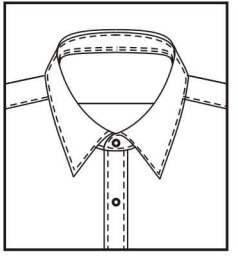
5L30  
peak collar E



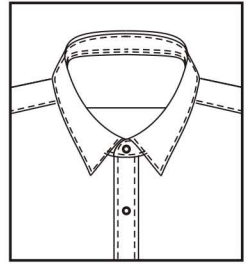
5L80  
rounded collar A



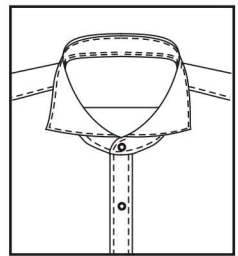
5L54  
small rounded collar E



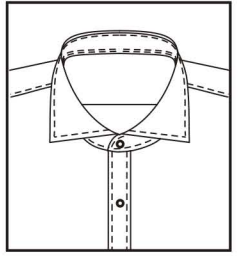
5AL2  
Middle pointed collar E



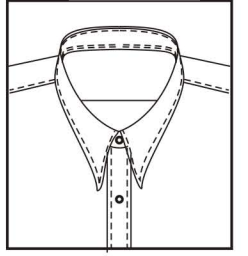
5AL1  
Small pointed collar E



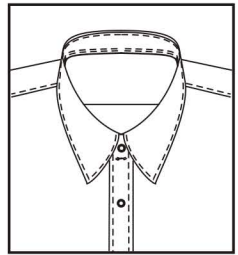
5L38  
Angel shape collar N



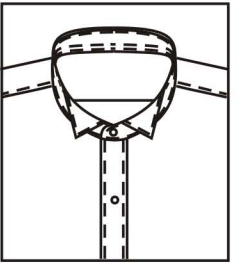
5L36  
Angel shape collar L



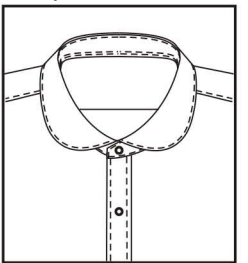
5L26  
peak collar A



5L42  
Arch collar G

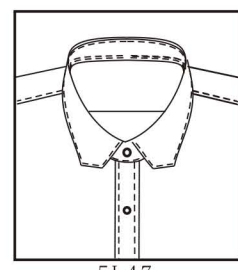


5582  
97# tuxedo collar  
with round collar band

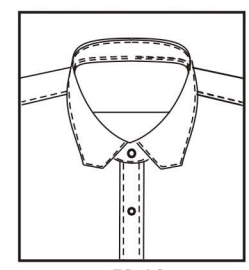


5L80  
rounded collar A

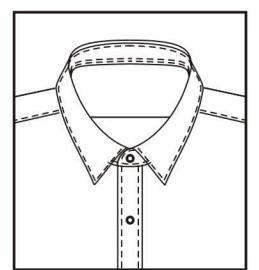
# Collar style



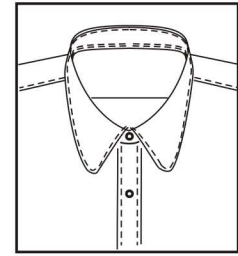
5L47  
C style



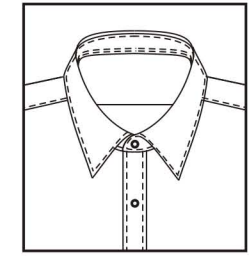
5L48  
E style



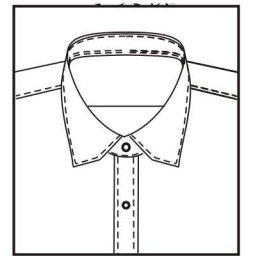
5AK7  
Small pointed collar D



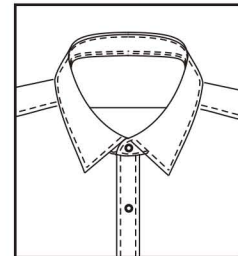
5L44  
Round collar C



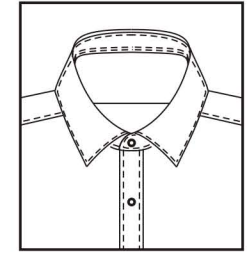
5AK8  
Middle pointed collar D



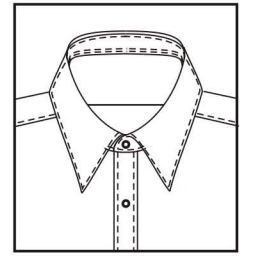
5L50  
hexagon E



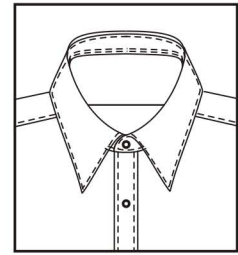
△5AL5  
Middle squared collar G



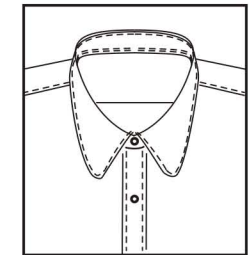
5AL4  
Small squared collar G



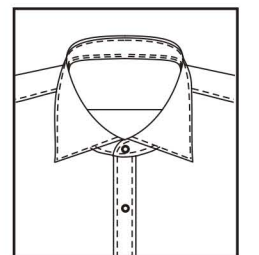
5AL3  
Large pointed collar E



5AK9  
Large pointed collar D

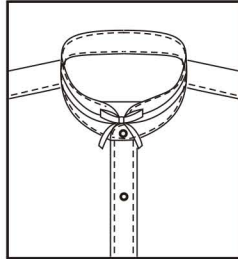


5L44  
Round collar C

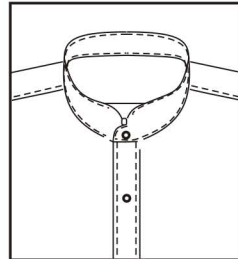


5L33  
Cut away collar H

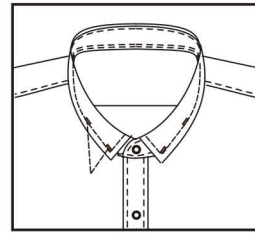
# Collar style



5AJ3

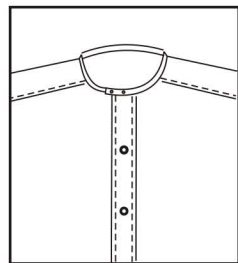


5886



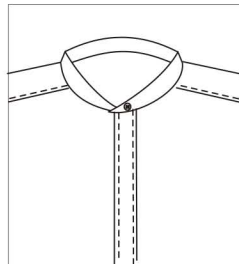
56H2

58# banded collar-add taps 58 band collar(no ribbon) ATT square collar, adding 2 bars around collar



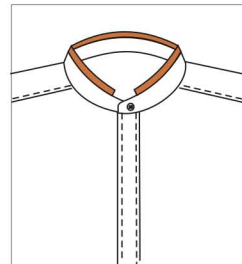
5357

53# banded collar



5FA3

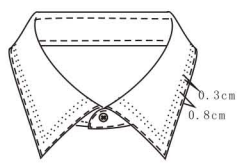
51# banded collar



5358

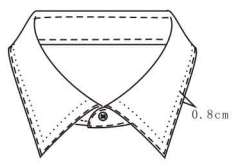
59# banded collar, upper 1cm use contrast fabric-

### Special Collar Style



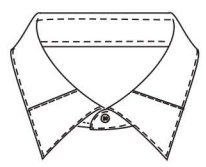
500A

double 0.15 pic stitch on collar with 0.2 pic length and 0.4 pic distance



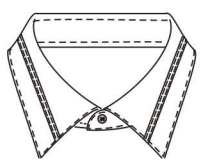
500B

Collar B: 0.15 pick stitch



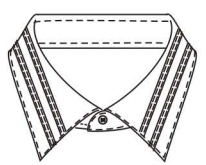
548C

Collar R: square patch on collar surface, customer appointed—



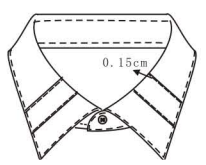
500E

Collar E: single horizontal facing edge customer appointed—



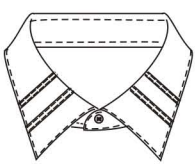
500F

Collar F: double horizontal facing edges customer appointed—



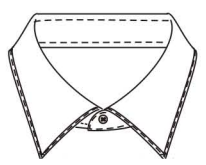
500H

Collar H: 2.5cm width patch on collar surface, customer appointed—



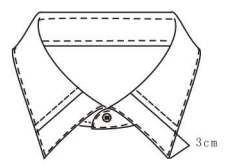
500G

Collar G: quadruple vertical facing edges customer appointed—



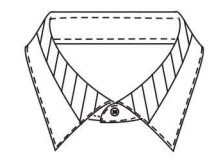
500I

Collar I: 0.4cm facing edge on collar surface and collar point, 0.15cm pick stitch, facing edge customer appointed—



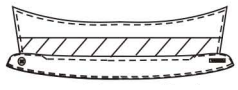
548F

Collar U: 1cm pleat on collar surface (3cm from collar edge)



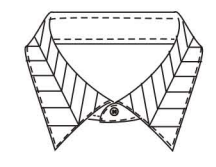
5B13

O1 style collar, customer appointed fabric on upper 1/2 collar surface



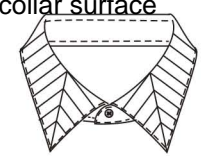
5B04

Collar B2: customer appointed fabric on collar style 8



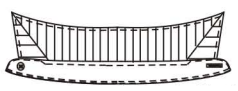
500D

Collar D: + shape split collar



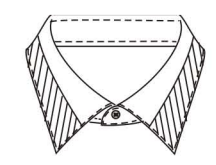
500C

Collar C: customer appointed fabric on collar edge



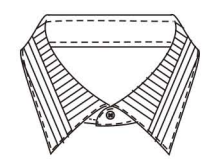
548K

A3 collar with V ship contrast



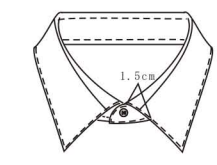
547C

collar O, contrast--



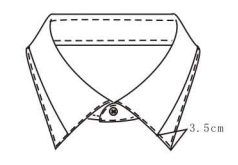
548R

Collar A9: customer appointed fabric on collar style 7, 0.15cm pick stitch



548B

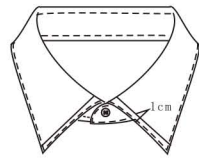
collar Q, contrast-



548H

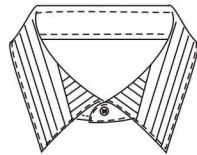
Collar A1: joint collar face, contrast for the round of the back collar-

### Special Collar Style



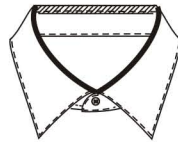
548J

Collar A2: 1cm customer appointed fabric on collar style 4, 0.15cm pick stitch



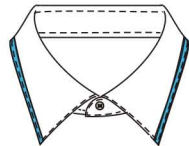
548L

collar with joint (A4 method) (collar top stitch 0.15cm)



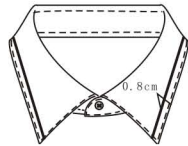
548P

A style-



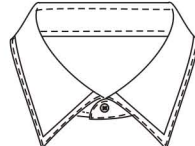
554A

piping customer appointed-



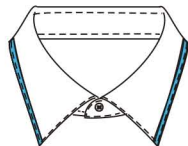
5B08

0.8cm contrast-



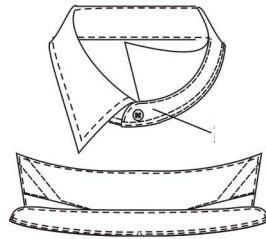
547A

Collar M: facing edge around collar, 0.15cm pick stitch, customer appointed—



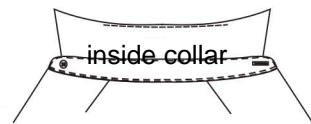
554B

Customer appointed fabric for decoration strip(for 530C, 530F, 530J and 5A05)



5K07

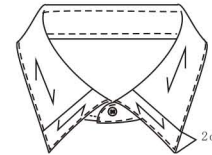
reversed collar(bottom collar with one layer 5030 elastic lining)



57C1

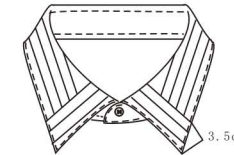
collar without top stitch (one line inner the collar)

### Special Collar Style



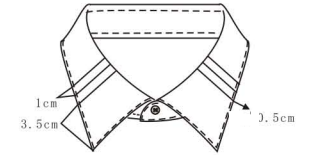
5B05

Cross cut on collar point 2cm position



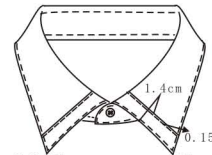
548G

V shape collar with 3.5cm collar point contrast



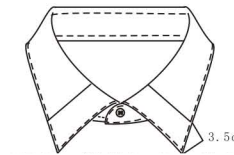
500K

Collar K: triple 0.5cm pleats on right&left



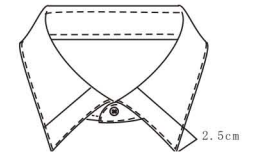
500L

Collar L: 1.4cm contrast edge on collar surface, 0.15cm pick stitch, customer appointed—



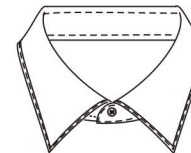
5B06

3.5cm split on collar contrast-



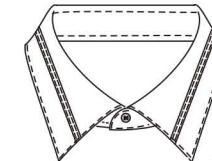
5B07

2.5cm contrast on collar-



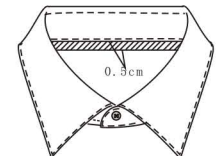
500J

Collar J: 0.6cm facing edge on collar surface, 0.15cm pick stitch, facing edge custom appointed—



5A05

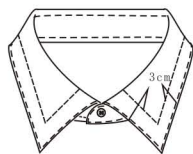
Collar with decoration strip, strip straight cut, strip width 0.6cm with 0.1cm top stitch at both sides



548N

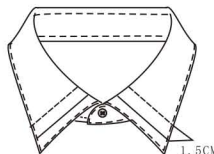
Collar A6 shape with 0.5cm contrast piping on collar band-

### Special Collar Style



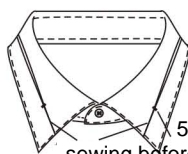
548M

Collar A5: double pick stitch, no collar stay, stitch distance 3cm



548S

collar B1 shape with collar surface 1.5cm pleat

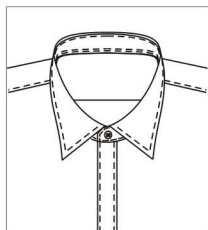


5B09

collar band connection hidden "y" shape pleat and bar tack

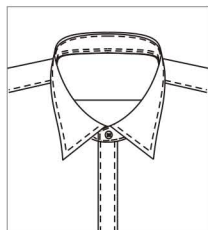
5cm seal 0.6 knot sewing before tie a knot

### Collar standard style



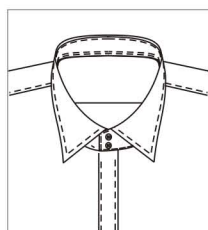
5277

Notched collar band w/one button



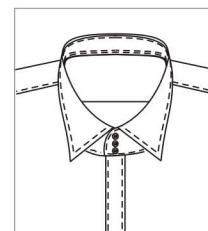
S-5274

Squared collar band w/one button



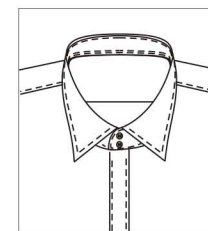
S-5275

Squared collar band w/two button



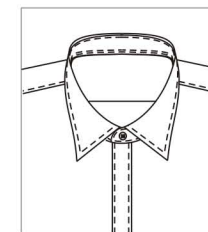
S-5273

Rounded collar band w/three button



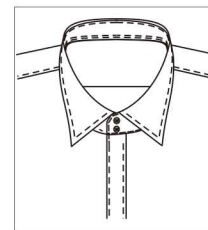
S-5271

Rounded collar band w/two button



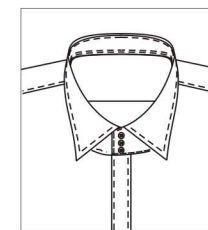
S-5270

Rounded collar band w/one button



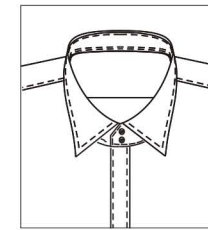
5279

Collar band: Notched collar band w/two buttons



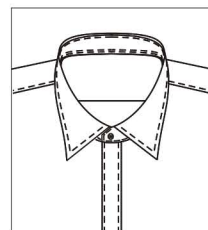
S-5276

Collar band: Squared collar band w/three button



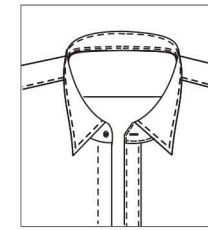
S-5279

Notched collar band w/two buttons



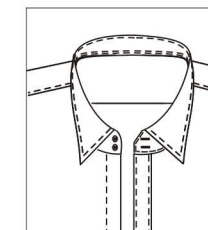
S-5277

Collar band: Notched collar band w/one button



S-527A

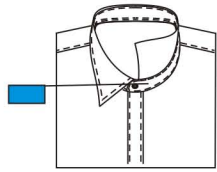
Collar band: collar stand left square, right round, 1 button



S-5278

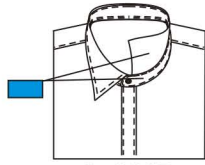
Collar band: collar stand left square, right round, 2 button

### Contrast for Collar



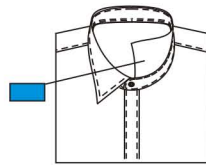
S-5549

contrast inside of collar:  
outside of collar band contrast  
fabric-



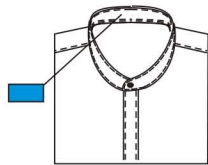
S-5517

contrast inside of  
collar:inside of  
collar-

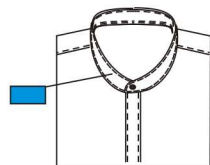


S-5532

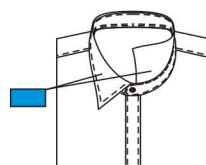
contrast on the  
top of collar:upper  
collar inner contrast-



collar inside

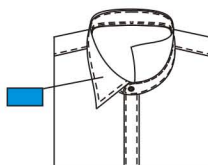


Collar outside

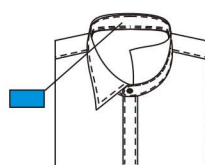


S-5551

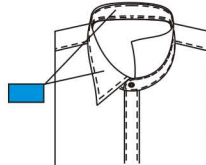
contrast on the  
top of collar:Top  
collar contrast fabric-



S-5552  
contrast outside  
the collar on the  
top:upper collar  
top contrast-



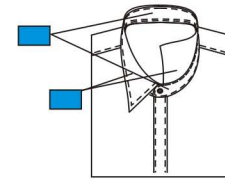
S-5533  
contrast inside  
of collar:collar  
band contrast



S-5518

collar fabric:  
outside of collar-

### Collar and cuff contrast

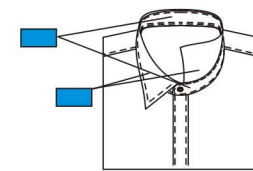


5511

collar fabric:  
Collar & cuff contrast  
fabric--customer  
appointed fabric( )



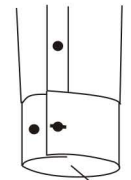
cuff fabric:cuff fabric-



5512

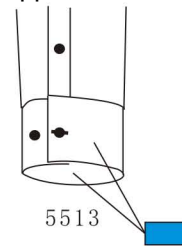
collar fabric:collar fabric

cuff outside contrast  
( fabric may not be the  
same as cuff inside  
contrast fabric)



5534

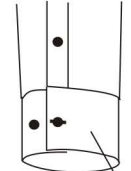
contrast inside of cuffs  
(can't be same to the outside  
fabric of the cuffs)



5513



554D

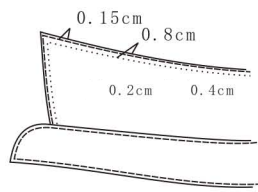


554D

contrast outside the cuff:

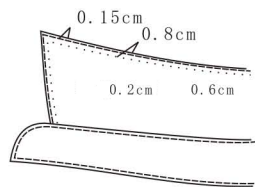


### Collar pic stitch form



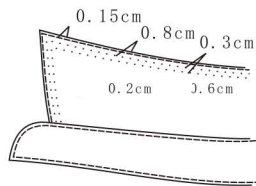
5504

Collar pic stitch



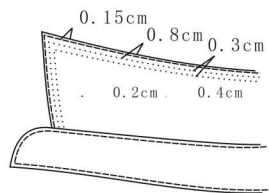
5506

Collar wide pic stitch



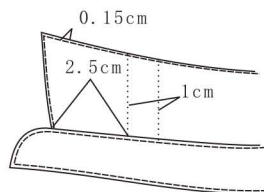
5508

Collar double wide pic stitch



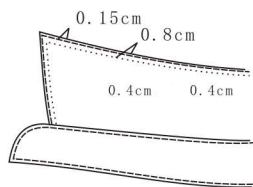
5507

collar double pic stitch



550C

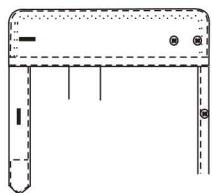
collar parallel double pick stitch



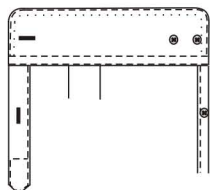
5C36

Handmade collar pic stitch

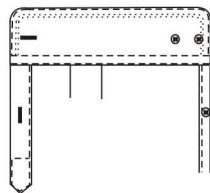
### Cuff pic stitch



550B



5509

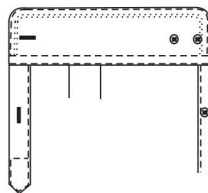


550A

Cuff Double Wide Pic Stitch

Cuff Double Pic Stitch

Cuff Wide Pic Stitch



5C37

Handmade cuff pic stitch

### Collar point length

9B22 Collar point 4cm

9B12 collar point 5.6cm

9A02 collar point 7.1cm

9A52 collar point 8.2cm

9A53 collar point 8.8cm

9B15 collar point 11.2cm

9A63 collar point 5.2cm

9A01 collar point 6.4cm

9A03 collar point 7.6cm

9A52 collar point 8.2cm

9A55 collar point 10cm

## Collar band width

9A64 collar band width 2.5cm	9A65 collar band width 3cm
9A11 collar band width 3.5cm	9B05 collar band width 3.8cm
9A13 collar band width 4.2cm	9A67 collar band width 5cm
9A68 collar band width 5.5cm	9A14 collar band width 4.5cm

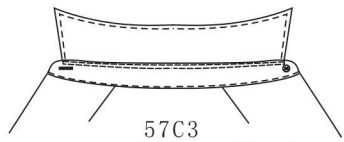
## Collar tie space

9A31 collar tie space size +0.6cm	9A30 Collar tie spacing size 0 cm
-----------------------------------	-----------------------------------

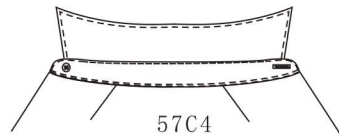
## Front collar stand height

9A20 front collar stand height 1.9cm	9A21 front collar stand height 2.2cm
9A22 front collar stand height 2.5cm	9A71 front collar stand height 3cm
9A24 front collar stand height 3.2cm	9A72 front collar stand height 3.5cm
9A25 front collar stand height 3.8cm	9A73 front collar stand height 4cm
9A74 front collar stand height 4.5cm	9A75 front collar stand height 5cm

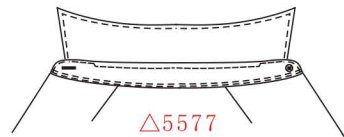
## Centreline on collar



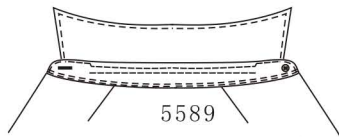
57C3  
Making double pic stitching for middleline of collar



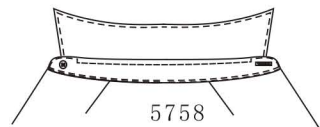
57C4  
0.1cm wide top stitch on back collar band



Δ5577  
Centreline on collar: inclining of middle collar stitching

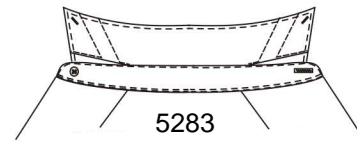


5589  
Centreline on collar: top stitching centreline on collar with oblique angle

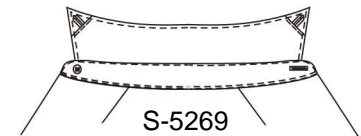


5758  
Centreline on collar: top stitching centreline on collar with vertical angle

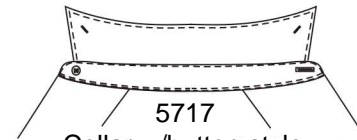
## Button down and collar stay



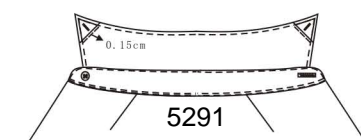
5283  
Collar stay:unfixed collar tab with button



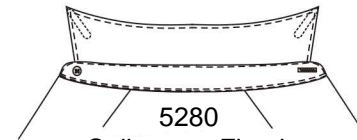
S-5269  
Collar w/button style:little collar with button



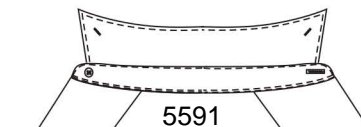
5717  
Collar w/button style: Collar point button 2.5cm distance from collar point



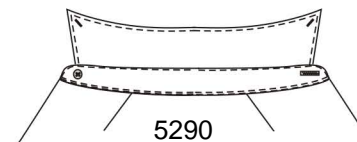
5291  
Collar w/button style: Collar point w/hidden button



5280  
Collar stay:Fixed



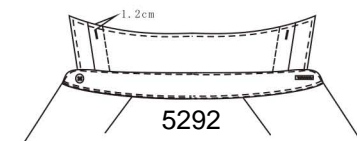
5591  
Collar w/button style: collar point button 1.5 inch higher



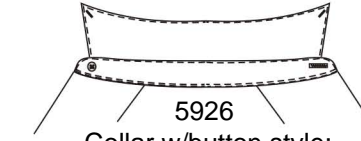
5290  
Collar w/button style:Collar point w/button



Δ 5281  
Collar stay:Movable

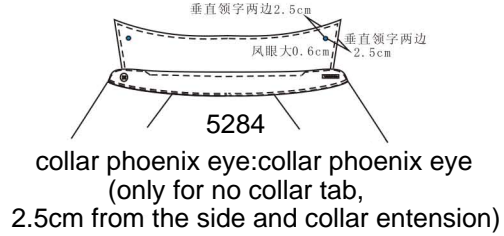
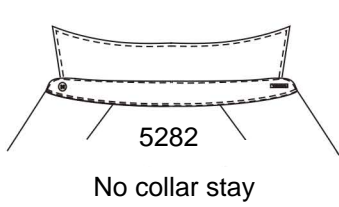


5292  
Collar w/button style: hidden collar button, inner pleat as hided collar button

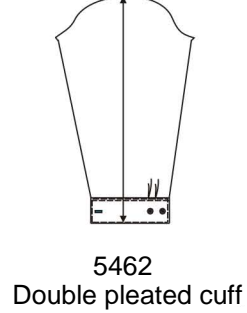
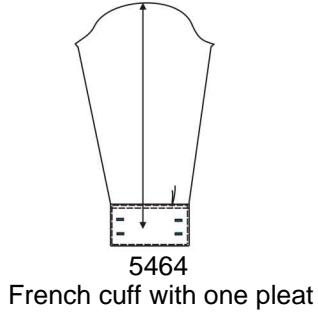
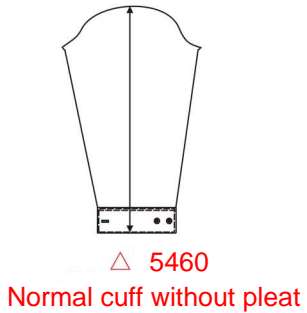
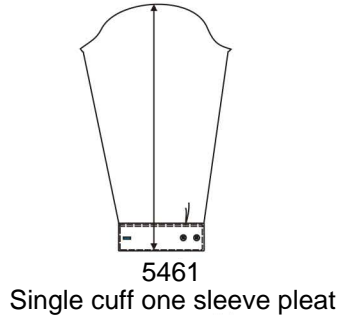
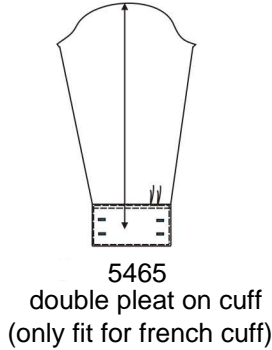
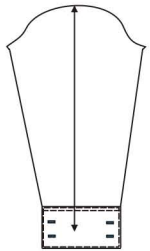


5926  
Collar w/button style: collar point space 0.6cm

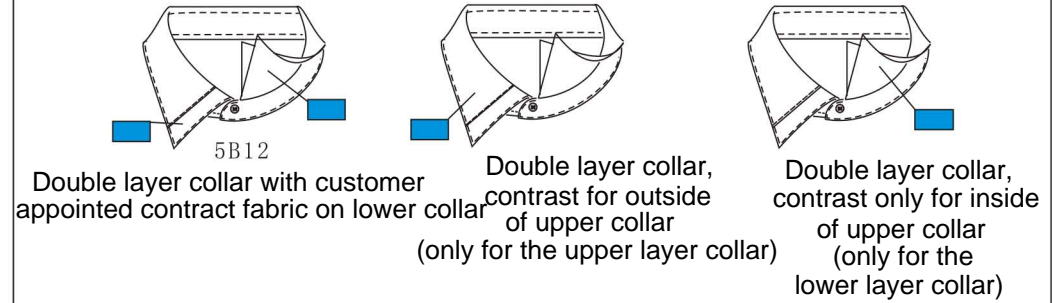
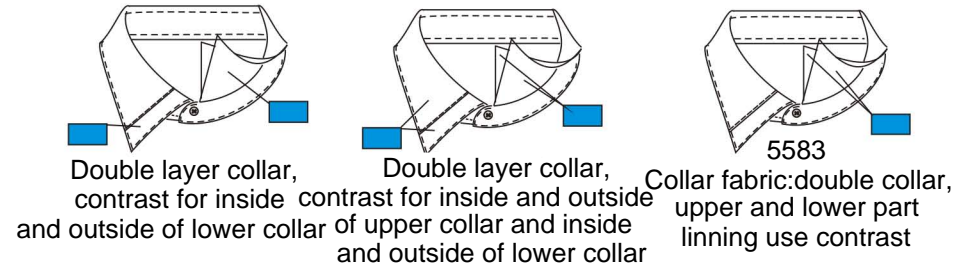
## Button down and collar saty



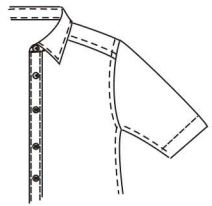
## Cuff pleat style



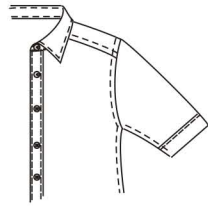
## Contrast for double-layer collar



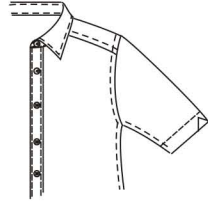
## Short sleeve style



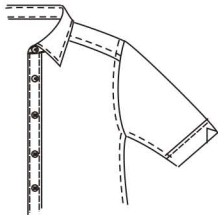
S-54A0  
Short sleeve Plain



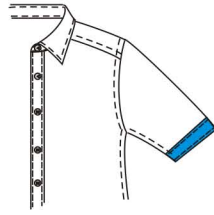
S-54A1  
Short sleeve hem



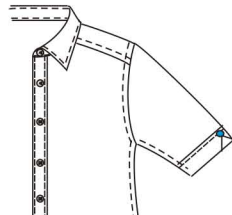
S-54A2  
Plain with slit



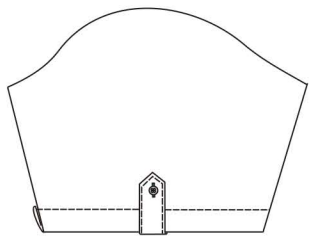
S-54A3  
Hem with slit



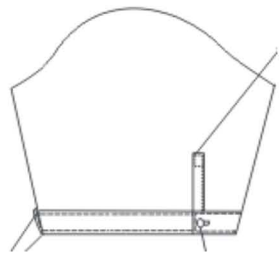
S-54A4  
Short sleeve with cuff



S-54A5  
Hem with slit & one button

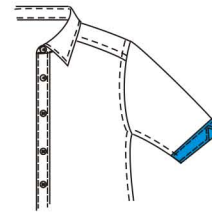


5778  
Short sleeve with pointed belt

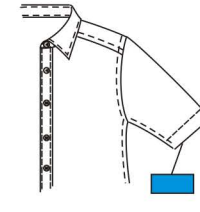


5AH1  
Short sleeve with square cuff ,  
cuff with 1cm top stitch

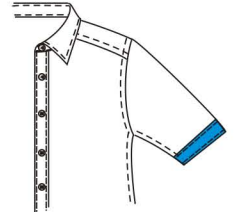
## Contrast for short cuffs



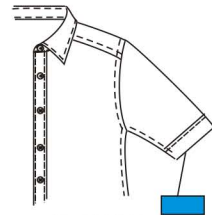
S-54A8  
Short sleeve with  
cuff & slit



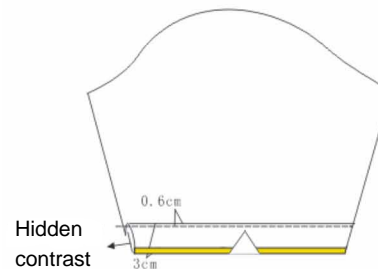
S-54A9  
Short sleeve inner cuff



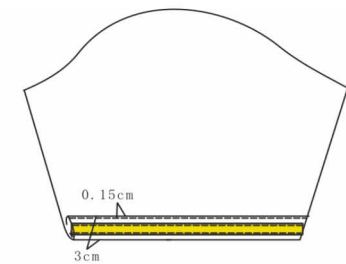
S-554K  
Cuff of short sleeve



S-54A7  
Cuff hem of short sleeve

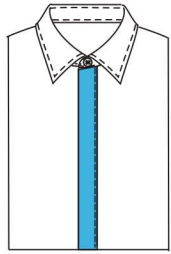


54B0  
Cuff hem of short sleeve  
adding 0.5cm and add vent

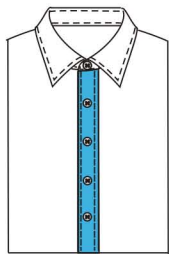


5AC4  
Placket with tape on cuff of  
short sleeve shirt

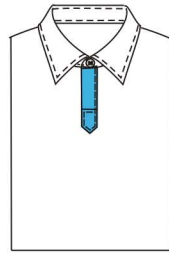
## Placket contrast



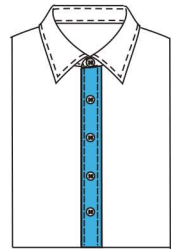
5536  
Hidden placket



5537  
Outside of placket



5596  
left front fly customer  
appointed color



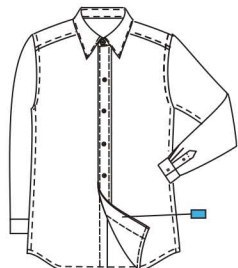
5633  
Left placket top



5535  
Hidden placket  
inner contrast



5540  
Left inner plain front  
contrast fabric



5634  
Left placket inner

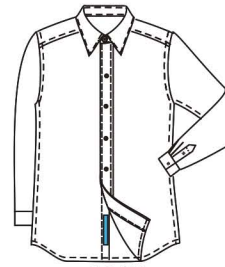


5538  
Inside left of placket  
fabric matching color

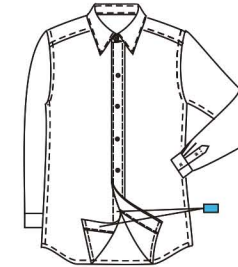


5755  
Piping added on right placet,  
customer appointed piping

## Placket contrast



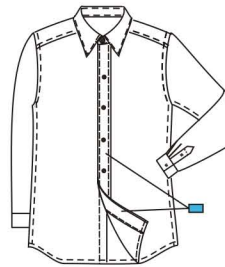
554P  
Embroider on extra fabric  
on placket, customer appointed



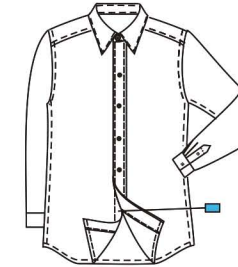
5543  
Right front contrast fabric



5541  
Right placket inner



5539  
Trim fabric on placket  
(inside and outside)

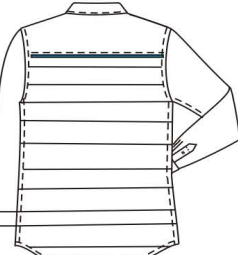
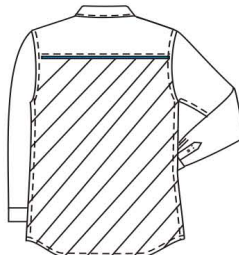
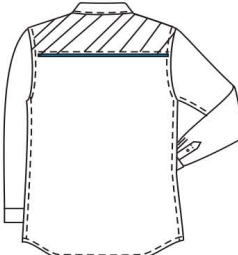
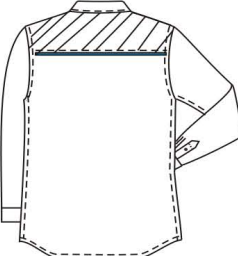







5542  
Right placket fabric


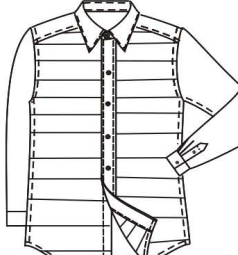





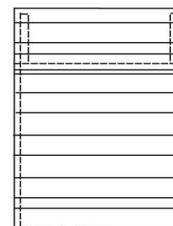
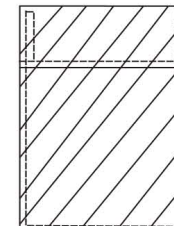


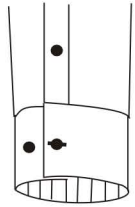
5595  
Stick braid on right front

# Cutting direction

 <p>5808 Zonal cutting for Back panel</p>	 <p>531C back body slant cut</p>	 <p>5174 Yoke outside &amp; inside diagonal cut</p>
 <p>5176 outer yoke 45 degree diagonal cut</p>	 <p>5175 Yoke inside diagonal cut</p>	 <p>531A fabric cut in zonal</p>
 <p>532E Inner plain front diagonal cut</p>	 <p>531R slant cut for inner placket of hidden front</p>	 <p>530P Placket with slant cut</p>

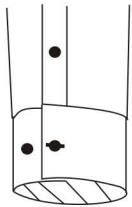
# Cutting direction

 <p>531B Front piece diagonal cut</p>	 <p>5807 Zonal cutting for front panel</p>	 <p>5815 Left and right front</p>
 <p>531H the outer of right palquet latitude cutting</p>	 <p>531E the outer of right palquet slant cutting</p>	 <p>530Q the outer of right palquet slant cutting</p>
 <p>531G horizontally cut the placket fabric and make the stripe horizontal</p>	 <p>5811 horizontal cutting for pocket</p>	 <p>570A Pocket diagonal cut</p>



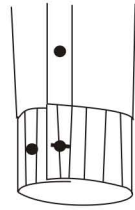
549J

zonal cutting for inner side of the cuff



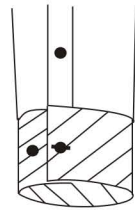
547K

Inner cuff diagonal cut



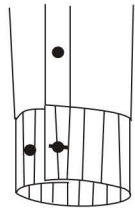
549I

cutting the cuff following the latitude line



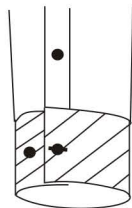
549H

slant cutting for the inside and outside of cuff



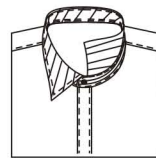
549B

Cuff stripe vertical cut



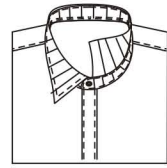
549A

Cuff with slant cut



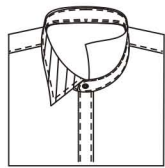
549C

Collar with slant cut



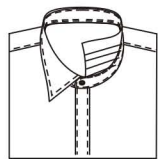
549D

Collar stripe vertical cut



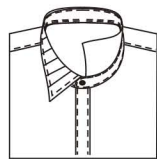
549F

up collar top slant cut



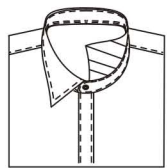
5802

inside of top collar standard cutting



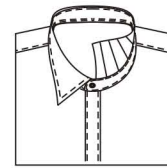
5801

cut top collar leaf in zonal way



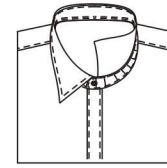
5816

inside of top collar 45 degree slant cutting



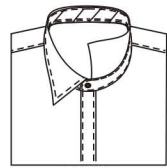
5803

inside of top collar zonal cutting



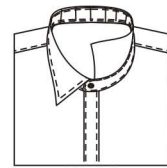
5805

inside of collar zonal cutting



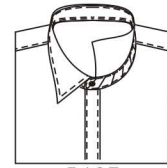
548D

Inner collar band diagonal cut



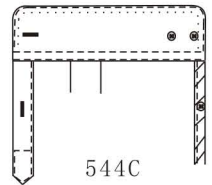
5804

collar face latitude cutting



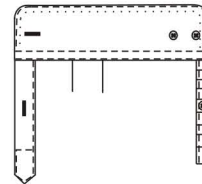
548E

Outside of collar band diagonal cut



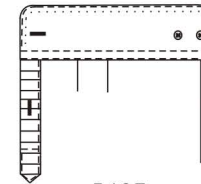
544C

Smaller placket sleeve diagonal cut



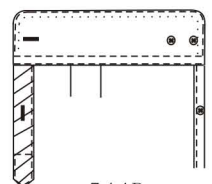
544G

latituded cutting for small sleeve placket



549E

shirt gusset latitude cutting

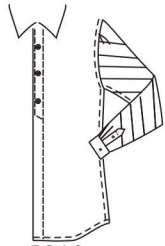


544B

Bigger placket sleeve diagonal cut

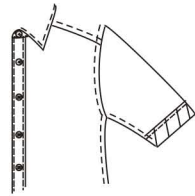


### Cut direction



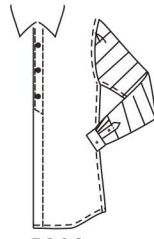
5810

Sleeve 45  
angle slant cutting



5818

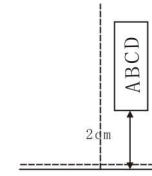
Short sleeve button  
flying 45 degree slant cut



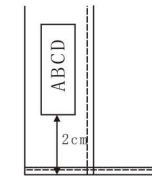
5809

Sleeve zonal cutting

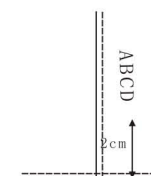
### Monogram position



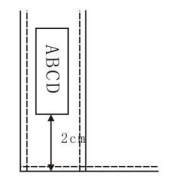
Face side of  
right placket bottom



Reverse side of  
right placket bottom



Face side of  
left placket bottom



Face side of  
left placket bottom



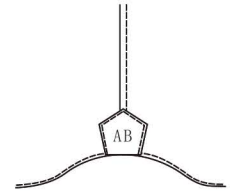
Left sleeve placket  
Right sleeve placket



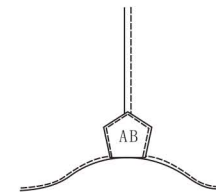
Left sleeve placket bottom  
Right sleeve placket bottom



Left sleeve gusset  
Right sleeve gusset

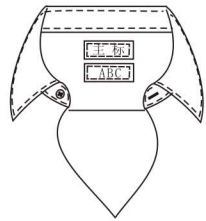


Left gusset

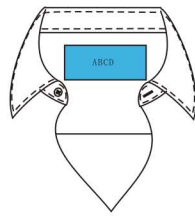


Right gusset

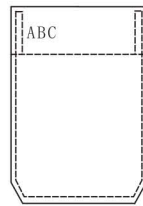
### Monogram position



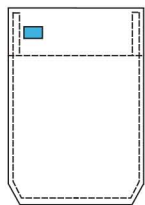
Inside yoke with small stripe  
Above 1cm brand label



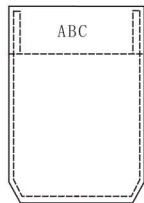
Name label with mono



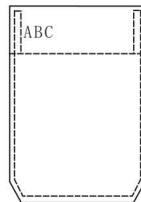
Right of pocket top



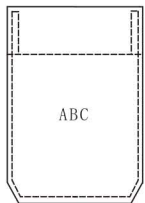
Right of pocket  
top with Cameo logo



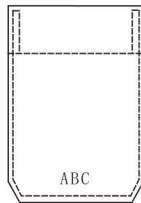
Centre of the pocket top



Left pocket top

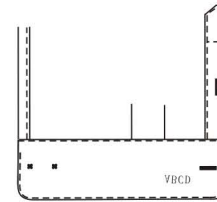


Centre of the pocket

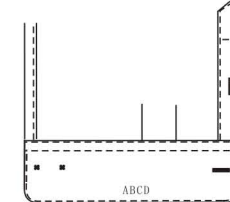


Pocket bottom

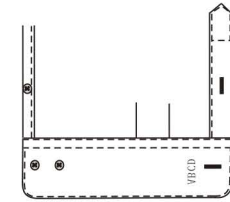
### Monogram position



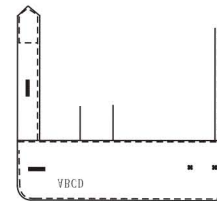
Inside left cuff



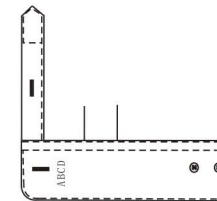
Mono on middle  
of the cuff



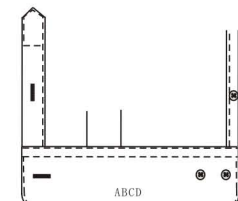
Side of right cuff with vertical



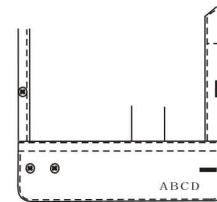
Inside right cuff



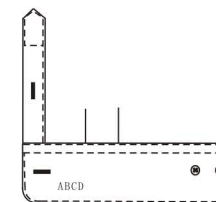
Side of left cuff  
with vertical



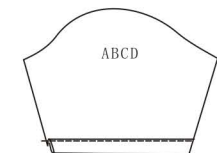
Right cuff center with mono



Face side of right cuff



Face side of left cuff



Left bicep centre with mono

# Monogram Position



monogram on left chest (second button level) not including collar band button



left bottom of shirt, 2cm from the front placket and 2cm from the edge



Left waist



monogram on right chest (second button level) not including collar band button



Right waist



monogram on right chest (third button level) not including collar band button



on left waist 46cm from neck point



monogram on left chest (third button level) not including collar band button



5th button on left front panel (including the button on collar band)

# Monogram Position



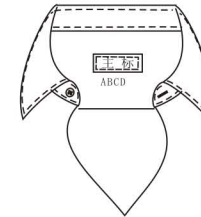
Right chest



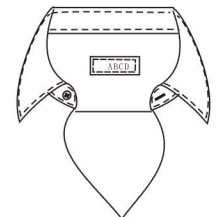
Left chest 5cm above the bottom of front panel



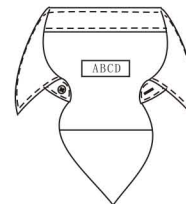
Inside yoke (Position for stitching label)



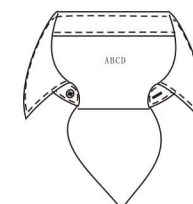
Inside yoke (1cm lower than stitching label position)



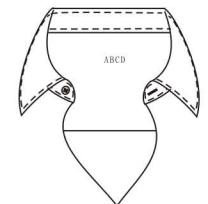
A piece of cloth stitched at inside yoke



A piece of cloth stitched at inside yoke

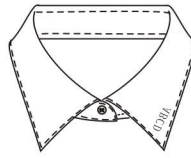
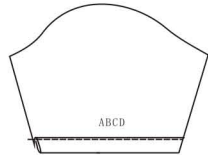
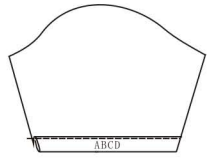


inside the top of yoke



Inside Yoke with LOGO (Position for stitching label)

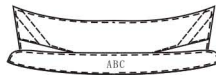
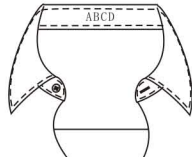
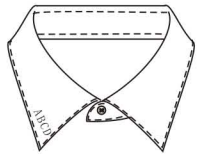
## Monogram position



Centre of the right short sleeve cuff  
Centre of the left short sleeve cuff

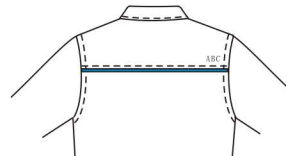
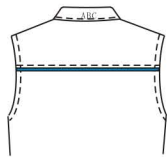
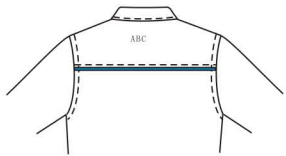
Centre of left short sleeve cuff,  
4cm from the edge

Right collar point



Center of inner collar band  
Left collar point (The stand collar will be  
the centre of outside collar band)

Center of outside collar band  
(The stand collar will be  
the centre of inner collar band)

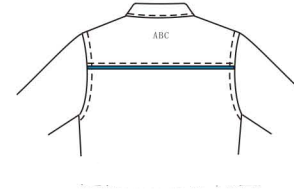


Top of Outside yoke

middle of collar leaf

Left bottom of outside yoke

## Monogram position



Outside yoke (place to stitch the label)

### Front placket buttonhole



5600

All vertical buttonholes



5581

horizontal buttonhole on front placket



520T

first 3 buttons a group, last button a group, double buttons a group in middle, the last second group one horizontal buttonhole, one vertical buttonhole



520E

placket single buttonhole and two line buttons (vertical)



520G

placket double buttons and one buttonhole (horizontal buttons)



520W

Small buttons on tuxedo shirt



512A

double button and buttonhole horizontal buttonhole



5106

front buttoning style: double button and buttonhole at every button position

### Front placket buttonhole



531N

lower the 2nd button by 0.6 (not include button on collar band)



531K

raise the 2nd button by 0.2 (not include button on collar band)



531P

lower the 2nd button by 1.0 (not include button on collar band)



531L

Second placket button higher 1.0cm



531M

The second placket button higher 1.4cm (not include button on collar band)



531Q

lower the 2nd button by 1.4 (not include button on collar band)



531W

Hidden button w/ 4 stud holes through front



532R

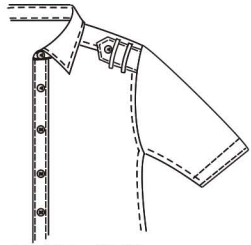
Hidden button front top 3 buttonholes penetrate



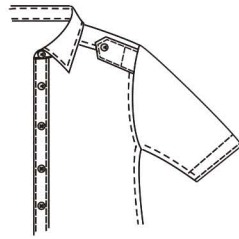
530V

Hidden front with last buttonhole sewing through

# Shoulder Strap

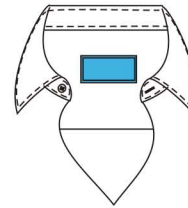


5173 shoulderstrap style:Epaulet with loops



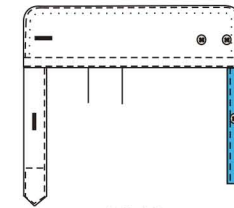
5172 shoulderstrap style:Epaulet

# Contrast



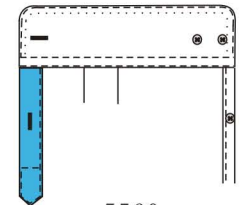
5550

contrast inside shoulders:  
yoke inside patch (L8\*W6cm)  
fabric color appointed-



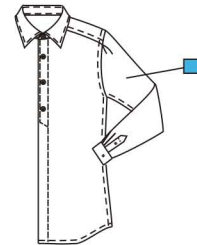
5546

Small sleeve placket:  
small sleeve placket--



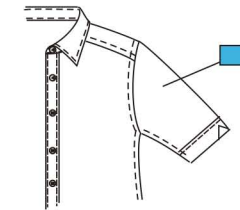
5560

sleeve gusset with  
contrast fabric:  
big sleeve contrast--



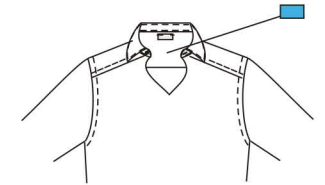
554N

contrast on sleeves:  
sleeve contrast fabric-  
customer appointed fabric--



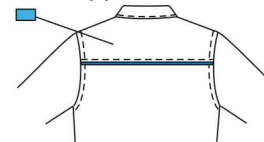
554Q

contrast on sleeves:  
Customer appoint sleeve contrast  
(short sleeve)



5544

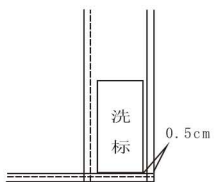
accessories color:  
special pocket welt



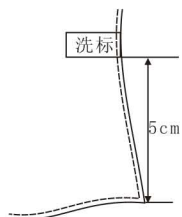
554F

contrast outside shoulders:  
Trim fabric on outside yoke

# care label position

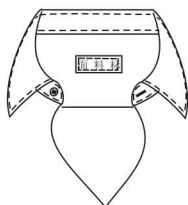


57P2  
the position of care label:  
care label left bottom placket

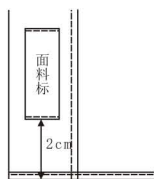


57P3  
△ the position of care label:  
care label in side seam-

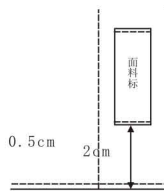
# fabric label



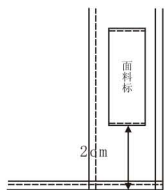
59A7  
Position: fabric  
label-inside of yoke



57P0  
Position: fabric label  
attach left backside of bottom



57P7  
French cuff button:  
French Cuff without cuff links



59A8  
fabric label is above  
the right card pocket-

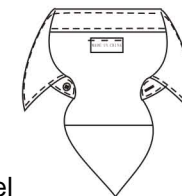
# original label position



57P4  
△ origin label  
fixed below main label

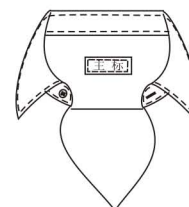


Origin label customer offered  
sewing on the left of brand label

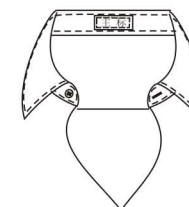


The original label  
sewn around the brand label

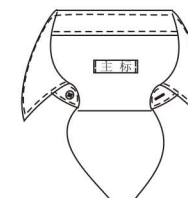
# Brand label position



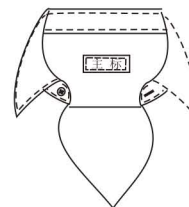
57D7  
△ Sew the brand  
inside yoke



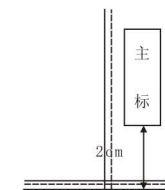
57D8  
Main label stitching on  
bottom collar surface



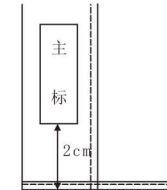
57D2  
Two sides sewing



57D1  
all sides sewing the label

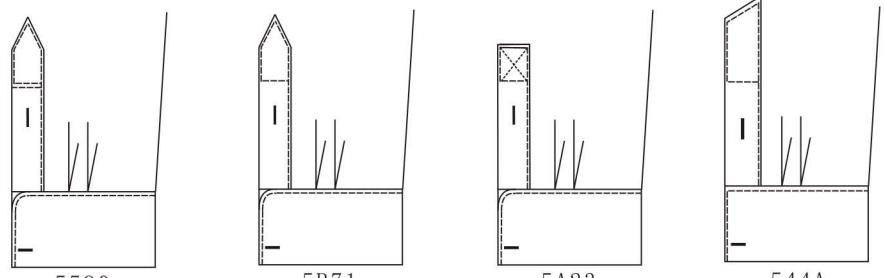


59A5  
main label stitching on  
the reverse side of the  
left bottom placket

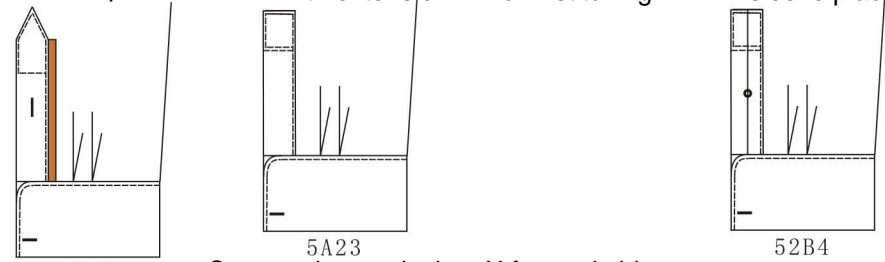


59A6  
main label stitching on  
the reverse side of the  
right bottom placket

# Cuff placket style



5590 seal shirt placket extension with double top stitch  
 5B71  $\Delta$  sleeve placket with extension  
 5A23 Square sleeve placket X form stitching  
 544A Bevel angle sleeve placket



5F95 extender sleeve placket the bigger sleeve piping with 0.3cm appointed piping  
 5A23 Square sleeve placket, X form stitching  
 52B4 1/2 square sleeve placket with double stitch (big sleeve placket 2cm, small sleeve placket 0.8cm, bar tack 3cm)

# Side seam style



58TR binding seam  
 58U4  $\Delta$  manual piping

# Top stitch requirement

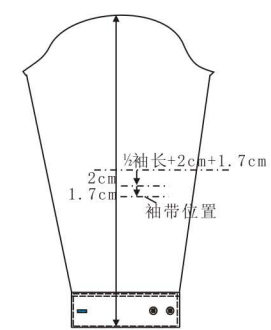


57R6 Plain placket front with 0.3cm top stitch

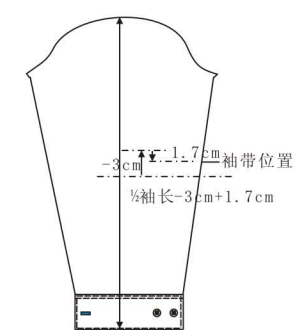


5715 front fly with 0.15cm top stitch

# Sleeve belt position



54B1 sleeve belt at elbow



54B2 sleeve belt at upper arm



# Pick stitch



550D

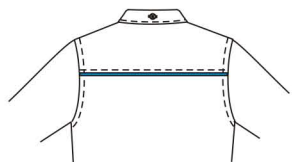
double pick stitching on body



550J

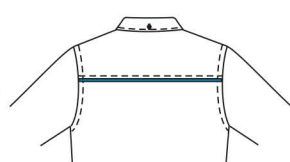
single pick stitching on body

# Back collar middle buttoning style



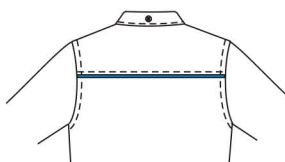
5571/5293

back collar band horizontal buttonhole fixing button



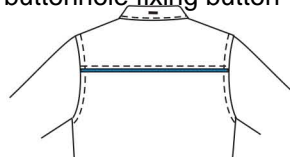
5882

lock vertical buttonhole on middle of back collar (0.5cm distance from collar seam)



5737

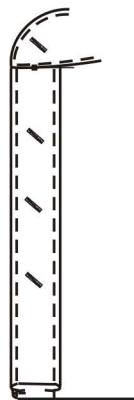
Back of band collar sew a button in middle



5AQ9

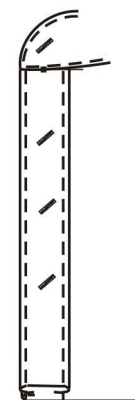
1.7cm buttonhole on back collar centrally

# Buttoning style



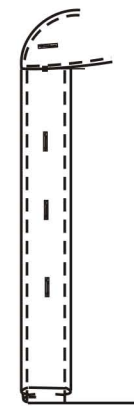
531J

placket with 45 degree slant buttonhole

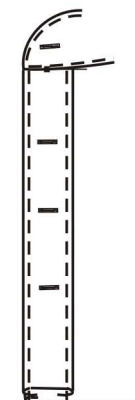


531I

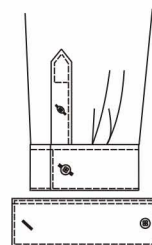
135 degree front buttonhole



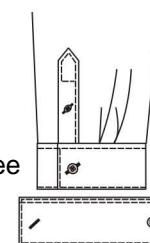
Regular making way-buttonhole making way-collar band with horizontal buttonhole and front with vertical buttonhole



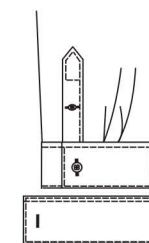
Collar band with horizontal buttonhole and the front with horizontal buttonhole



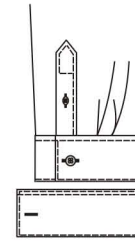
Sleeve placket with 45 degree slanted buttonhole cuff with 45 degree slanted buttonhole



Sleeve placket with 135 degree slanted buttonhole cuff with 135 degree slanted buttonhole



Sleeve placket with horizontal buttonhole and front with horizontal buttonhole

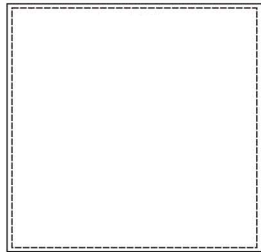
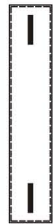


Regular making way-buttonhole making way-collar band with horizontal buttonhole and front with vertical buttonhole

# Spare part requirement

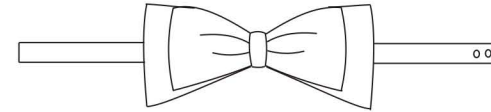


536E Hidden pocket besom with two buttons



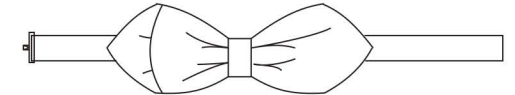
- 5L66 36\*36 handkerchief, tie with strip
- 5L67 Square 30\*30,tie with strip
- 5C81 33cm\*33cm hander chief, high densith lock
- 5D97 30cm\*30cm handkerchief,High density lock
- 5AU3 30\*30cm Hankerchief
- 5308 25cm\*25cm hankerchief,high density lock
- 57Z9 25cm\*25cm Hankerchief
- 5336 16cm\*16cm pocket square, high density lock
- 5F73 the length of collar fixed strip= diatance  
between the 4th button anf 5th button add 2.7cm

# Tie style



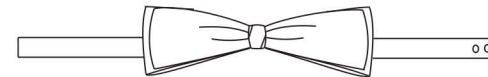
5968

Style 1# craftsmanship for  
double collar tie



5969

Style 2# craftsmanship  
for diamond collar tie



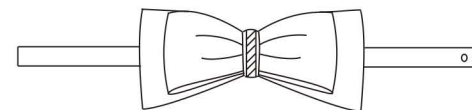
5970

Style 3# craftsmanship for three  
layer collar tie without interlining



5971

Style 4# craftsmanship for  
three layer collar tie



5972

Style 5# craftsmanship for three  
layer collar tie with contrast tab

## Customer appointed thread

- 5623 Appointed buttoning thread for collar band button-
- 5624 Appointed buttoning thread for the second placket button(Counting collar band button) -
- 5625 Appointed buttoning thread for the third placket button(Counting collar band button) -
- 5626 Appointed buttoning thread for the fourth placket button(Counting collar band button) -
- 5627 Appointed buttoning thread for the fifth placket button(Counting collar band button) -
- 5628 Appointed buttoning thread for the penultimate placket button-
- 5629 Appointed buttoning thread for last placket butto-
- 5630 Appointed buttoning thread for the sleeve placket button-
- 5631 Cuff buttoning thread color --customer appointed
- 5622 Appointed shirt buttoning thread-
- 58K3 Appointed thread for collar top stitching
- 58N4 Appointed thread for cuff stitching
- 58R5 Appointed thread for body top stitching
- 5788 Customer appointed label sewing thread color-
- 5789 Appoint the thread for pocket buttonhole-

## Customer appointed thread

- 561B First Neckband buttonhole thread\_
- 5613 All neckband buttonhole thread -
- 561Z Second Neckband buttonhole thread\_
- 5632 Collar point with button/buttonhole color customer appointed--
- 5614 Second placket buttonhole thread (counting collar band button) -
- 5615 Third placket buttonhole thread (counting collar band button) -
- 5616 Fourth placket buttonhole thread (counting collar band button) -
- 5617 Fifth placket buttonhole thread (counting collar band button) -
- 5618 Penult placket buttonhole Thread-Appointed Color
- 5619 Last placket buttonhole Thread-Appointed Color
- 562A Sleeve placket buttonhole Thread-Appointed Color
- 5793 Appoint the thread for the third cuff buttonhole next to hand edge) -
- 5794 Appoint the thread for the second cuff buttonhole (next to hand edge) -
- 5792 Appoint the thread for the first cuff buttonhole (next to hand edge) -

## Customer appointed thread

562B Cuff buttonhole Thread-Appointed Color

599M Appointed buttonhole for right cuff-

599N Appointed buttonhole for left cuff-

5612 Buttonhole Thread-Appointed Color

## Appointed Button

57C6 Bottom button on front--

5N00 Placket with double buttons and double buttonholes(exclude the Collar band button ), the second button appointed by customer

5M00 Placket with double buttons and double buttonholes(exclude the Collar band button ), the first button appointed by customer

5584 Customer appoint placket button-

5576 Last buttonhole- horizontal

57C8 Customer appoint collar band button-

59D3 First button distance--customer appointed (not including collar button)-

5572 Appointed the second placket button (not accounting collar band button)-

57N7 Button choice

5718 Customer appointed snap button -

5585 Customer appoint collar point button-

57C7 Customer appoint sleeve placket button-

5A22 customer appointed buttons for the 1st button from cuff

5025 Customer appoint left cuff button-

5026 Customer appoint right cuff button-

5A30 customer appointed flap-left pocket with customer appointed button

5F96 lower collar buttoning form:customer appointed lower collar buttoning

## Cuff width

546K Cuff width 5cm.

546L Cuff width 5.5cm

546M Cuff width 6cm.

546B Cuff width 6.5cm

546A Cuff width 7cm.

546E Cuff width 7.5cm

546C Cuff width 8cm

546N Cuff width 8.5cm

546F Cuff width 9cm.

546P Cuff width 9.5cm

546G Cuff width 10cm

546Q Cuff height 10.5cm

546H Cuff width 11cm

546R Cuff height 11.5cm

546J Cuff height 12cm

546S Cuff width 6.5, 7.5

546T Cuff width 6.6, 7.6.

546U Cuff width 6, 7cm

546V Cuff width 8cm.

546W Cuff width 7.9, 8.9

546X Cuff width 8, 9

546Y Cuff width 9, 10

50A1 Cuff width 8.6

## Placket button hole

560I Horizontal second placket buttonhole  
560J 45° slant second placket buttonhole  
560K 135° slant second placket buttonhole  
560L Horizontal third placket buttonhole  
560M 45° slant third placket buttonhole  
560N 135° slant third placket buttonhole  
560P Horizontal fourth placket buttonhole  
560Q 45° slant fourth placket buttonhole  
560R 135° slant fourth placket buttonhole  
560S Horizontal fifth placket buttonhole  
560T 45° slant fifth placket buttonhole  
560U 135° slant fifth placket buttonhole  
564A Horizontal Sixth placket buttonhole  
564B 45° slant Sixth placket buttonhole

## Placket button hole 43

564C 135° slant Sixth placket buttonhole  
564D Horizontal seventh placket buttonhole  
564E 45° slant seventh placket buttonhole  
564F 135° slant seventh placket buttonhole  
59B7 Horizontal eighth placket buttonhole  
59B8 45° slant eighth placket buttonhole  
59B9 135° slant eighth placket buttonhole  
59C1 Horizontal ninth placket buttonhole  
59C2 45° slant ninth placket buttonhole  
59C3 135° slant ninth placket buttonhole  
560V 45° slant penultimate placket buttonhole  
560W vertical penultimate buttonhole  
560X 135° slant penultimate placket buttonhole  
5602 Horizontal penultimate placket buttonhole  
560Y 45° slant last placket buttonhole  
560Z vertical Last buttonhole  
560I Horizontal Last placket buttonhole  
561A 135° slant Last placket buttonhole

## Top stitch style

- △57A1 Collar stitching 0.15cm
- 57A2 Collar stitching 0.6cm
- 57A3 Collar stitching 0.3cm
- 5288 triple top stitch on collar(0.15+0.3+0.6)
- 57C1 collar without top stitch(one line inner the collar)
- 57C2 Buttoning Style:= sewing button
- △57A5 Cuff top stitch 0.15cm
- 57A7 Cuff top stitch 0.3cm
- 5575 Cuff without top stitch(one line inner cuff)
- 57A6 Cuff top stitch 0.6cm
- 5841 Double top stitch on cuff(0.15cm + 0.5cm)
- 5305 Triple top stitch on cuff(0.15+0.3+0.6)
- △5709 0.15cm top stitch on placket
- 5716 0.6cm top stitch on placket
- 5729 stick 3.5cm top stitch in hand on left plain front  
(0.1cm stitch,0.5cm stitch spacing)
- 5715 Front fly with 0.15cm top stitch
- 57R6 Plain placket front with 0.3cm top stitch

## Interlining type

- △5700 Classic Collar interlining
- 5701 Soft collar interlining
- 5702 Thick collar interlining *하 47702*
- 5703 Harder Collar interlining
- △5704 Classic Cuff interlining
- 5705 Cuff soft interlining
- 5706 Cuff thick interlining *하 47706*
- 5707 Cuff enhanced thick interlining
- 5712 canvas with flower embroidery:soft interlining  
for side of sleeve placket(no-woven interling)
- 5708 placket interlining:interlining with 3223 on left placket
- 5AH6 placket interlining:right interlining with 3205
- 5AI4 placket interlining:Left placket press a picep of 3205 canvas
- 5AE2 placket interlining:right placket with 3223 stiffing

## First placket button to the collar seam distance

58TL Customer appoint the distance from the first button on placket to collar

59A1 5.5cm between first button and collar band bottom

59A2 6.5cm between first button and collar band bottom

59A3 7.5cm between first button and collar band bottom

59A4 8.5cm between first button and collar band bottom

## Monogram font

*ABCDEFGHIJKLMN OPQRSTUVWXYZ* RC01

**ABCDEFGHIJKLMN OPQRSTUVWXYZ** RC02

**ABCDEFGHIJKLMN OPQRSTUVWXYZ** RC03

*ABCDEFGHIJKLMN OPQRSTUVWXYZ* RC04

*ABCDEFGHIJKLMN OPQRSTUVWXYZ* RC05

**ABCDEFGHIJKLMN OPQRSTUVWXYZ** RC06

**ABCDEFGHIJKLMN OPQRSTUVWXYZ** RC07

**ABCDEFGHIJKLMN OPQRSTUVWXYZ** RC08

**ABCDEFGHIJKLMN OPQRSTUVWXYZ** RC09

## New customer order requirement

51A3 Excess fabric return

51A1 New customer trial order problems consult the Technology Department

51A2 New customer trial order return to the Technology Department after inspection

## Cuff flower button poaition

- 59C4 Sleeve placket button down 1cm
- 59C5 Sleeve placket button down 2cm
- 59C6 Sleeve placket button down 3cm

## Spare part requirement

- 57D3 Accessory is finished with style code
- 5993 Accessory seal with no style code
- 57D4 Accessory is unfinished
- 5983 Make a left sleeve
- 5984 Make a right sleeve
- 57P9 Make a pair of sleeve
- 7032 Right cuff parts series
- 7033 Left cuff parts series
- 7010 A pair of cuff parts

## Front button style

- 57B0 3 tuxedo buttonhole in the front
- 57B6 5 tuxedo buttonhole in the front
- 57B3 4 tuxedo buttonhole in the front
- 57B5 All tuxedo buttonhole in the front
- 57B7 6 tuxedo buttonhole in the front

## Armhole increase & decrease

- 58S2 Armhole increase 2cm
- 58S3 Armhole increase 1cm
- 58S5 Armhole decrease 1cm
- 58S6 Armhole increase 2cm



## Collar opening adjustment

58T0 Front collar opening lower 0.5cm

58T1 Front collar opening lower 1.0cm

58T5 Back collar opening lower 1.0cm

58T6 Back collar opening lower 0.5cm

## Front and back adjustment

58T9 Front add 4cm, back reduce 4cm(only stomach part)

58TK Front add 2.5cm, back reduce 2.5cm(only stomach part)

## Yoke height

5639 Back yoke height 11.5

5C63 Back yoke height 7cm

## Stomach adjustment

58TX Minus 1cm on stomach

58TY Minus 2cm on stomach

58TZ Minus 3cm on stomach

59TD Add 3cm on stomach

59TE Add 2cm on stomach

59TF Add 1cm on stomach

## Bicep adjustment

58TU Minus 1cm on bicep  
58TV Minus 2cm on bicep  
59TA Minus 1cm on bicep 9cm below  
59TB Minus 2cm on bicep 9cm below  
59TC Minus 3cm on bicep 9cm below  
59TG Plus 1cm on bicep  
59TH Plus 2cm on bicep

## Forearm adjustment

58UA Plus 1cm on forearm  
58UB Plus 2cm on forearm  
58UC Plus 3cm on forearm  
5592 Minus 1cm on forearm  
5593 Minus 2cm on forearm  
5594 Minus 3cm on forearm



△ 57B1 +sewing button



57B2  
=sewing button



5K11  
Claw sewing buttons(hand)