

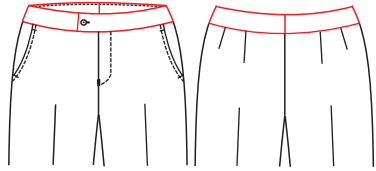


# Women pant Style book

# Instruction

1. Manual is used by the business department authorized by the platform. The business department can carry out market promotion selectively according to the market situation
2. The style design manual notes  $\Delta$  marks the default standard configuration
3. If the customer does not choose other personalized design options in the style design category, that is, using the (default) standard configuration options on behalf of the customer by default, we will design according to the (default) standard configuration
4. Only one design option can be selected in the same category in this style design manual. The customer should pay attention to avoid logical contradiction or illogical design, such as choosing both no front pocket and front half trousers with bag cloth in them
5. When the customer orders through the platform, the default configuration options do not have to be entered into the system, only the personalized style design options
6. Customer requests for personalized design options as long as they are defined in this manual must be entered into the design code of the customer
7. We will keep adding newly developed design options according to the market conditions, and the description of the content of the deposited design options will be improved according to the actual situation, and the version will be updated regularly
8. The right to interpret this design manual belongs to RCMTM
9. The customer has understood and accepted the above requirements before using this manual

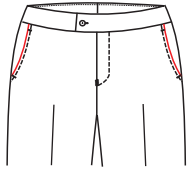
## Waist band



201A

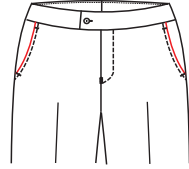
△ Arc shape waistband

## Front pocket



2104

2.5 Arc slant pocket



2101

△ 3.2 Arc slant pocket



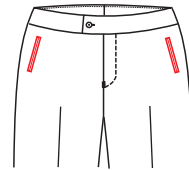
213C

No front pocket



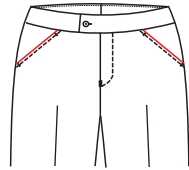
2136

Round jeans front pocket



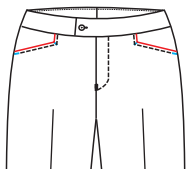
2131

Decorate double bosome  
front lower pocket with  
10cm width.



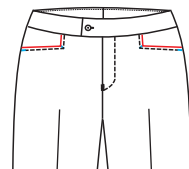
2103

Most slanted pocket



2138

DL jeans pocket



2139

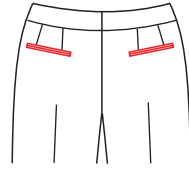
Small square front denim pocket

## Back pocket



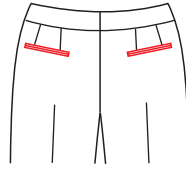
21A0

△ No back pocket



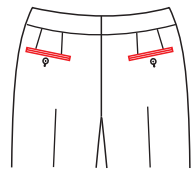
2200

Double besom rear pocket  
(invisible opening)



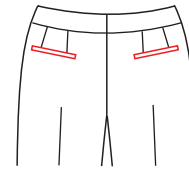
2206

Double besom  
fake pocket



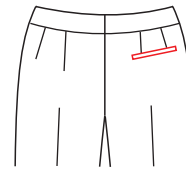
2202

Double besom rear  
pocket(invisiable  
opening)



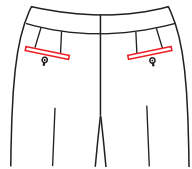
2221

Single besom back pocket



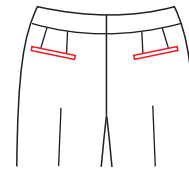
22P3

Only welt right back  
pocket (No buttonhole)  
no left back pocket



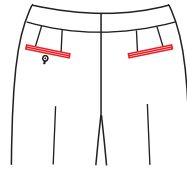
22G3

Single besom with  
button back pockets



2201

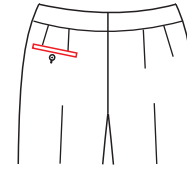
Single besom fake back  
pockets,no button



222E

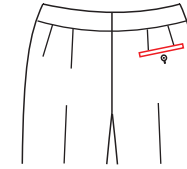
Double besom with button  
with left back pocket and  
Double besom decorating  
with right pocket

## Back pocket



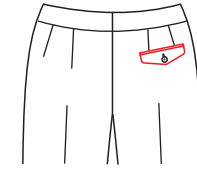
22G4

Single besom with button  
with left back pocket ,  
no right back pocket



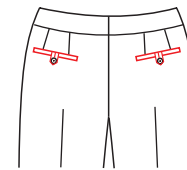
22G1

Single besom with button  
with right back pocket ,  
no left back pocket



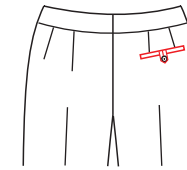
22F2

Diamond flap with button  
with right back pocket ,  
no left back pocket



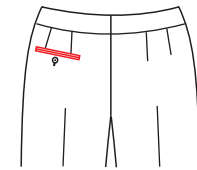
2223

Hip pocket style:  
Welt back pockets with  
loop and button



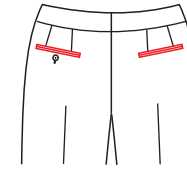
2205

Tab with button with  
right back pocket ,  
no left back pocket



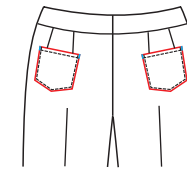
22G2

Double besom left back  
pocket,no right back pocket



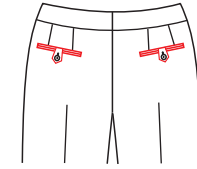
2204

Double besom with button  
with left back pocket and  
Double besom right pocket  
(no button and buttonhole)



2230

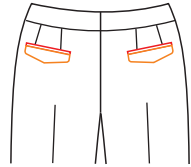
Back patch pocket  
with pointed bottom



2203

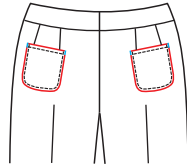
Double besom with pointed  
tab and button back pockets

## Back pocket



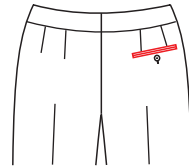
2212

Diamond shaped back pocket (double split wire with diamond cover)



2232

Back pocket with rounded corners



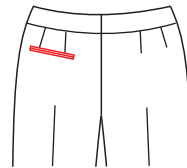
22G5

Double stitched buttonhole  
Right rear pocket,  
no left rear pocket



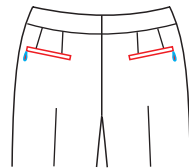
2207

Double open line left rear pocket not locked  
Eye not nailed. Concealed seam / double open stitching  
keyhole button right back pocket



22G6

Double open line right back pocket (no buttonhole),  
no left back pocket



220P

Single zipper back pocket

## Back pocket

## Back pocket besom material

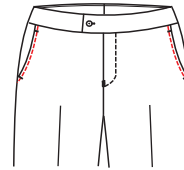
225E Back pocket besom, bottom with satin

2252 Back pocket besom, bottom with fabric customer appointed

## Pocket bartack thread

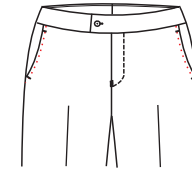
2195 front and back pocket bartack thread customer appointed

## Front pocket pick stitching/top stitching style



21A3

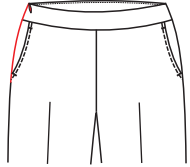
△ Front pocket 0.5cm top stitching



21A4

Front pocket 0.5cm pick stitching

## Placket



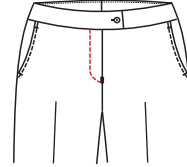
2428

Zipper on right seam , no placket on front

2424 Placket zipper customer appointed

2422 Placket with metal zipper

## Placket style



20S3

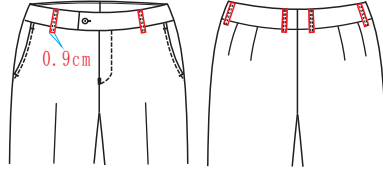
Right press left



## Belt loop style and Heel guard style



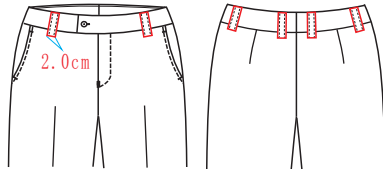
2329  
△ No belt loop



2330  
Normal belt loop



23B1  
Belt loop do not sewn to pant,  
sent with pant seperately

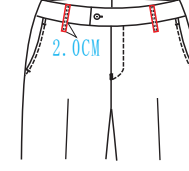


2332  
2.0cm wide tape

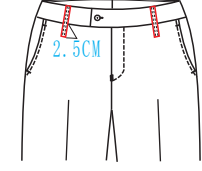
## Belt loop fixed style



2330  
Normal belt loop



234E  
Belt loop bottom  
fixed 2cm below  
waist seam.

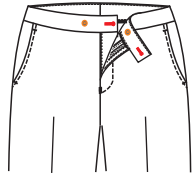


234K  
Belt loop bottom fixed  
2.5cm below waist seam



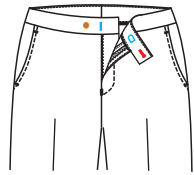
2345  
Fixed beltloops style:  
Bottom beltloop in waist

## Extender style



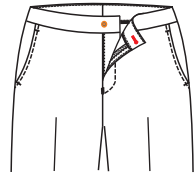
242A

△ Square extender with button and buttonhole



2421

Square extender with hook



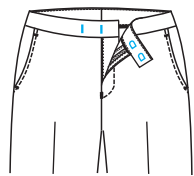
2411

No extension, with button



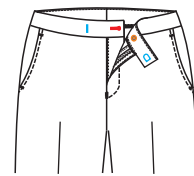
2412

No Waist extension



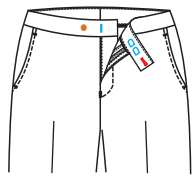
2425

Square extender with double hooks (extender 4 cm)



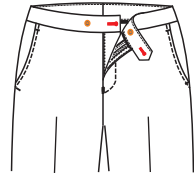
2427

Square extender, Hook 1CM from waist head, no link at zipper position



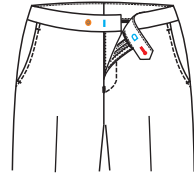
2426

Square extender, The hook is fastened, only the sword head position of the hook is increased by a hook 1.5cm forward, the right waist is not increased, the sword head is 5cm long, (use the increased hook front door crack, exposed, the waist is uneven, the customer accepts all the waist and the finished product effect)



2423

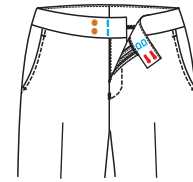
Pointed extender, buttonhole and button



2429

Sharp sword head, hook and pin

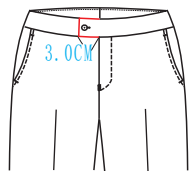
## Extender style



242V

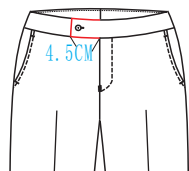
Square extended tab, double buttonhole and hooks (extended long 4cm, can only be used on 4.5cm waistband width)

## Extension length



△241A

Extension length 3cm



241T

Extension length 4.5cm

## Waistband Lining

△ 2431 Fabric waistband and waistband piping match knee lining

2432 Waistband lining use the fabric reverse side and waistband piping match knee lining

## Stitching Waistband

△ 24W0 Top Stitching both inside&outside waistband

## Wasitband fabric

- 23AF : Waistband fabric customer appoint  
(Folded straight waist containing waistband and lining)
- 23A1 Waistband fabric use the reverse side
- 23A3 Satin waist (including waist and waist when folding straight waist,  
customers accept the effect of adhesive penetration and other  
ready-made clothes)

## Fabirc for inner

- 29K6 the fabirc for inner waistband:white trim fabirc
- 29K7 Customers use black accessories

## Buttonhole thread

245G Customer appoint the buttonhole thread

## Button sewing thread

245J Sewing button thread customer appointed

## Button and buttonhole style

245E Button and buttonhole option:Hand made buttonhole

## 001button types

- 2454 Button-customer appointed-
- 245Q Fabric cover flat button(all buttons)
- 245R Fabric cover flat button(all buttons)  
with customer appointed fabric

## Buttoning style



245C

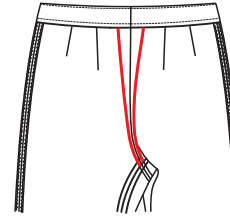
Buttoning style:claw shape  
buttoning(only for hand made)



245B

Buttoning style:"+ "sewing button style

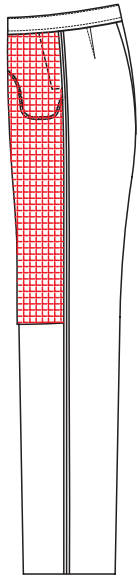
## Back seam



252B

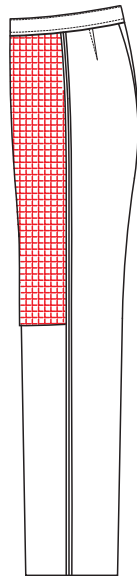
Seam with piping following the knee fabric color

## Pant lining



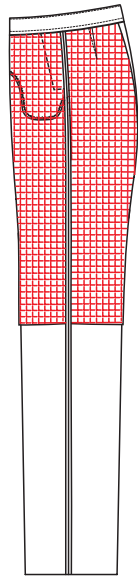
2502

△ Front lining,  
pocket inside  
the lining



250G

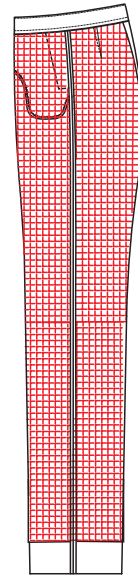
Front half lining  
(no front pocket)



2504

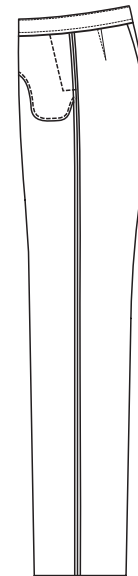
Back half lining, pocket  
fabric inside (no pocket  
ones ignore this)

## Pant lining



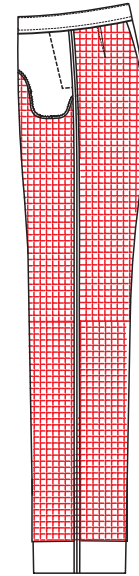
2506

Full lining, pocket fabric  
inside. (no pocket ones  
ignore this)



2500

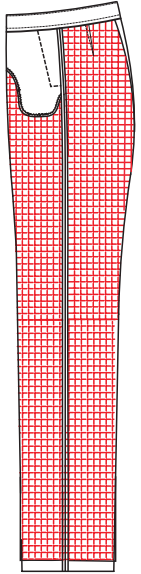
No pantlining



2508

Full lining, pocket fabric  
outside. (no pocket ones  
ignore this)

## Pant lining



2503

Full lining, pocket fabric outside.  
(no pocket ones ignore this) The pants are  
tucked in to the hem  
(Pants are easy to thread, choose carefully.)

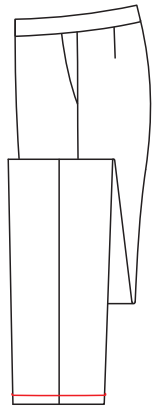


# Pant lining

△ 250D Pant lining customer specified--

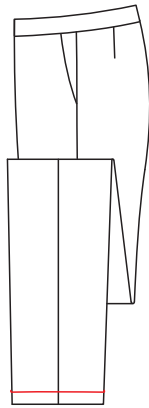
250B Dark fabric with black lining,  
light fabric with white lining

## Pant Bottom Style



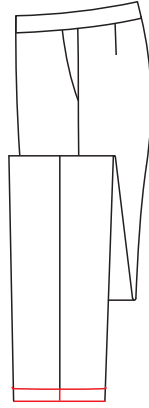
260L

Pant bottom 2.5cm cuff



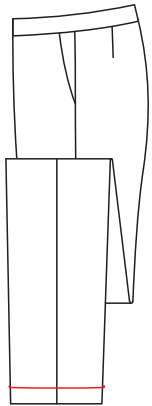
2602

Pant bottom 3.2cm cuff



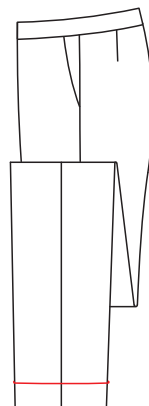
262E

Pant bottom 3.2cm cuff,  
cuff fabric customer  
specified-



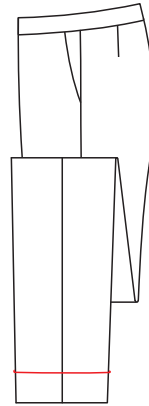
2604

Pant bottom 4.4cm cuff



260M

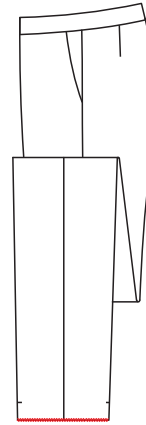
Pant bottom 6.0cm cuff



26AF

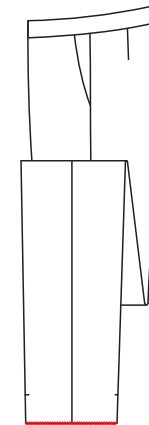
Leg opening 7.6cm turned out. The size  
of mouth is larger than 36cm and less  
than 36cm. If you can't do it, press the burr  
on the foot. Processing,  
customers accept the garment effect)

## Pant Bottom Style



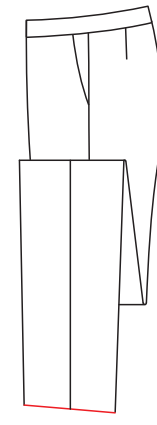
260J

Unfinished with  
5cm extra fabric



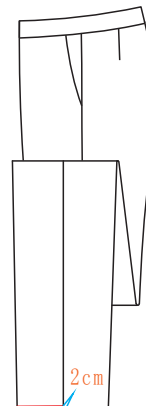
260G

Unfinished with  
10cm extra fabric



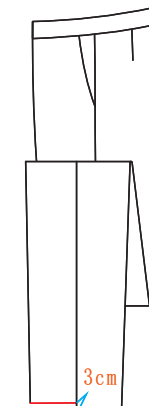
260K

Slant bottom with  
4cm inner edgefold



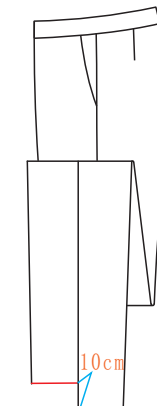
260I

Sstep pant bottom, front short  
and back long (difference of 2.0cm)  
garment pants length tolerance is  
plus or minus 2.5cm



260P

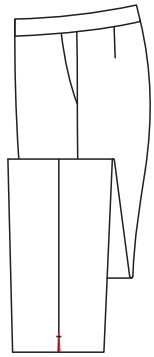
Step type foot opening, front short and  
long rear (poor 3.0CM) Length tolerance  
of garment length plus or minus 2-3cm



260T

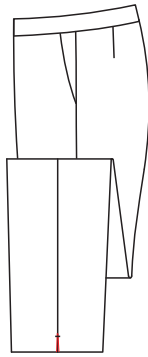
Step type foot opening, short front and long back (10.0cm difference)  
ready to wear Length (front) dimension tolerance plus or minus 2.5cm  
(not recommended) Check fabric, because it is impossible to ensure  
the inner and outer side seam and foot opening are aligned)

## Pant bottom side seam form



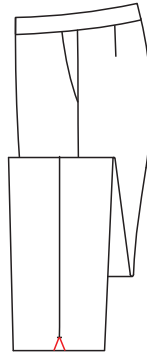
262Z

Pant bottom slit at the outside is 2.5cm long.



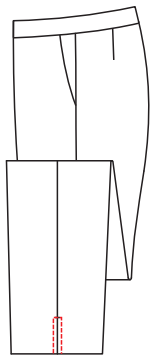
2626

Pant bottom slit at the outside is 3.5cm long



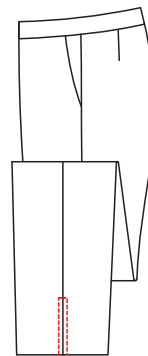
2622

Inside the pant bottom, the outer triangular opening is 2.5cm long and 2.0cm wide



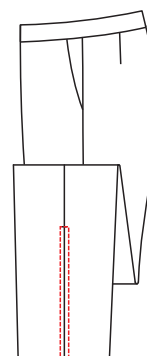
2621

Pant bottom slit at the outside is 8.0 cm long (0.5cm pic stitch on the slit)



2624

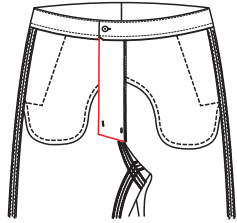
Pant bottom slit at the outside is 12.0 cm long (0.5cm pic stitch on the slit)



26A6

Pant bottom slit at the outside is 30cm long 0.5cm pic stitch on the slit

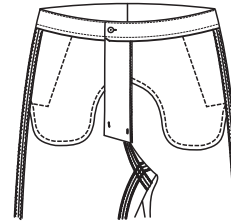
## Fly style



2401

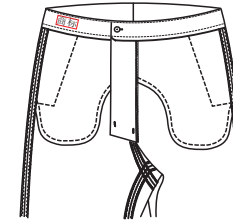
△ fly style:fold straight fly

## Brand label positon



2641

△ No brand label



2642

Brand label sewn on  
inner left front wasit  
band(2cm ahead of  
central side seam)-



28FE

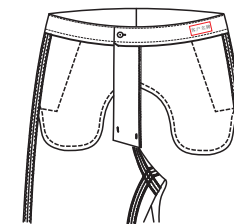
Brand label on the  
inner waistband  
central the back darts-

## Name card

265L Name card customer specified--

## Name card position

△ 2651 No name card.



2652

Name card on the right  
inner waistband 2cm  
from side seam

## Care label position

△ 2639 Care label sewn on piping of left front inner waistband(central position of brand label

263J he customer specified 3 care labels to be overlapped and sewn on the left front waistband and 2cm from side seam. The top, middle and bottom are respectively..

263H : Care label sew on the left back waistband,central with the brand label.

2633 No care label

## Care label

28BH Care label customer specified-

## Label lining composition

28H9 Tag, care label indicating lining composition-

26A5 Care label indicating lining composition-

## Print fabric code

28H2 Tag, care label indicating lining composition-

26A4 Care label indicating lining composition-

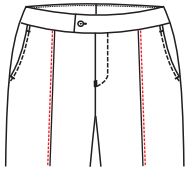
## Print fabric code

28H8 Tag, care label printed fabric code-

26A1 care label printed fabric code-

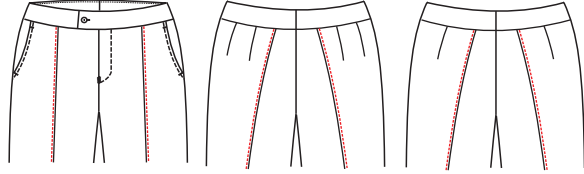
## Finishing requirements

According to the difference between waist and hip, the system automatically matches whether the back piece is single dart or double dart



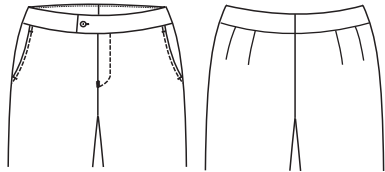
272A

Front crease line from waist to pant bottom with 0.2cm topstitch (Plain front pants only)



2721

Front and back crease line from waist to pant bottom with 0.2cm topstitch(plain front only)



2720

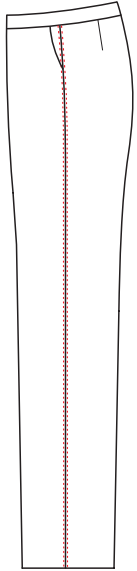
Unironed pants midline

## Remaining material delivery

2715 Remaining material return to warehouse

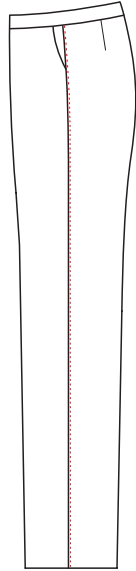


## Side seam



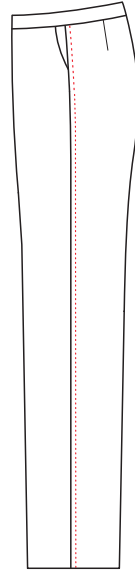
23W6

0.6cm double pic stitch  
on side seam, side seam  
is crack seam



2314

Lapping seam with  
0.15cm pic stitch



232H

Lapping seam with  
0.7cm pic stitch

## Strap buckle

24JA 24JA strap button is located in the middle of the waist (3.5 centimeters behind each side of the posterior seam).  
The front is 1 / 2 of the front waist, and the back is 4cm)

## Non slip buckle at waist

244U Add anti slip buckle at waist

## Print fabric No

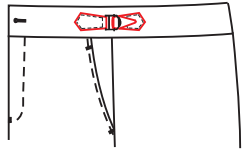
28H8 Print indicated fabric No on tag and care label

26A1 Print indicated fabric No care label

## Metal logo tag

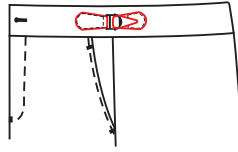
23B9 Customer indicated metal Logo tag on first left belt loop

## Waist adjustment



23T1

Adjust buckle on waist-



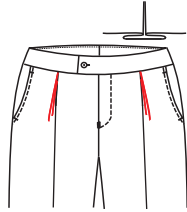
23T2

Round adjust buckle  
on waist without loop

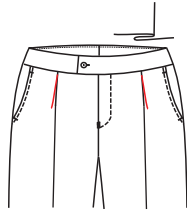
## Pleats Style



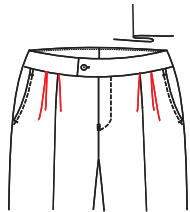
2020  
Plain front



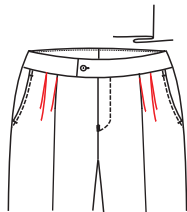
2026  
One opposite pleat



2021  
Single pleat  
forward side seam

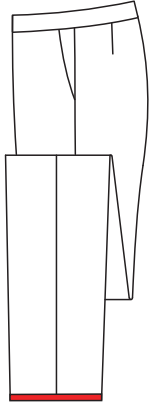


2027  
Double pleated to front door



2025  
Double pleats forward side seam

## Bottom decorated bar



26G3

Press 1.0cm wide bar  
fabric on bottom, pant  
length allowance is 2.5cm,  
bar fabric not align and  
customer accept the effect  
bar fabric appointed-

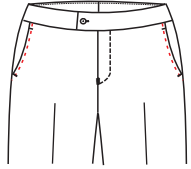
# Front pocket top knot to waist seam



△ Do not select code,  
default job Technique:  
knot on the front pocket  
5 cm below the waist

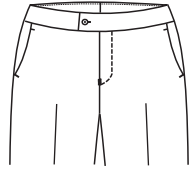
219C  
The knot on the front pocket is  
1 cm above the waist seam

## Front pocket top stitch/pic stitch



21A4

0.5cm wide pic stitch  
on front pocket



21A6

No top stitch on front  
pocket(make with hidden thread)

## Waist width



△ 201C  
Waist width 3.5cm  
Default process, no code selected



2015  
Waist width 4.5cm, single  
piece cutLining (with  
group resin lining)



201F  
Waist width 5cm,  
single cutLining  
(lined with TZ resin)

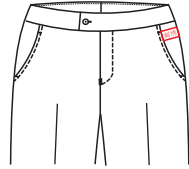


## Embroidery position



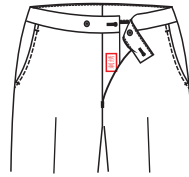
5152

Embroidery on left front pants  
(3cm away from waist seam,  
It is 1.5cm away from the pocket  
mouth, and the embroidery content  
is longEmbroidery with parallel  
pocket mouth)



5005

Front left diagonal pocket  
The upper end of the mat is  
close toEmbroidery at waist  
seam



4948

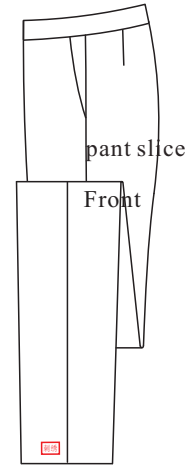
Bottom line



4966

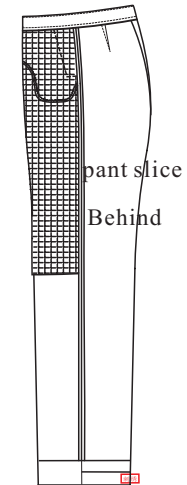
2cm centered on right back  
pocket(the waist seam is clean  
without back pocketLower 4.5cm)

## Embroidery position



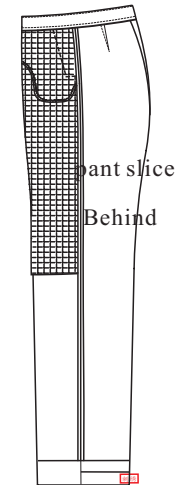
5163

Outside the left hem, 2cm  
in front of the side seam,  
Embroidery 2cm from bottom



5214

Wear resistant embroidery  
(Note: both sides are  
embroidered with anti  
abrasion belt)



5203

Right anti abrasion  
band embroidery

4608: Customer brand

5209: The customer's name is embroidered on the trademark