



Women Vest

Design Manual

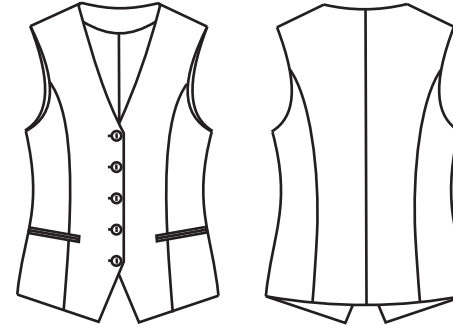
MTM style book description

1. This style book is entitled to use by Marketing department which could offer them to selected clients
2. Any options with " △ "icon in this manual are considered as standard default options
3. If no indication specific options by customers, we will always do default options automatically
4. You are only allowed to select one options in identical class for avoiding conflicts
5. When you place orders in orderings sytem, any default options are no need to input unless specified personal code
6. You are only allowed to input this manual listed code, for other codes not listed in this book, you need to apply with our company before adopting, and we will upgrade the style book regularly for including more new codes
7. We will upgrade this style book continuously
8. The style book final explanation is subject to RCMTM
9. You are allowed to use this book before your understanding and acceptance above mentions points

Vest

VA02 Women Vest

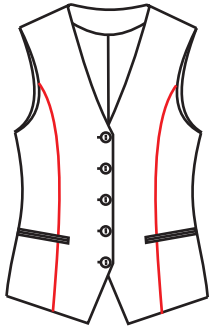
Body Construction



△ V041

Arch shape panel combination

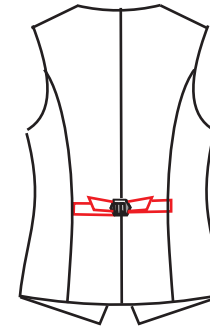
Front Pannel Options



△ V031

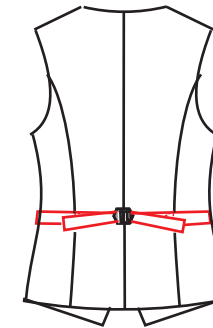
Front panel knife shape design

Back Style



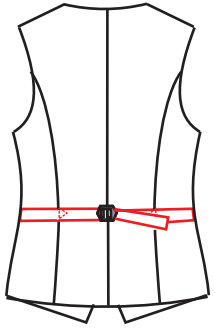
V20C

Back panel with adjustable removable buckle in tape
Buckle No: QMJQZ03



V2D8

Remoable buckle on the sideseam on the waistband
Left & right belt length are same and might be longer than
back length

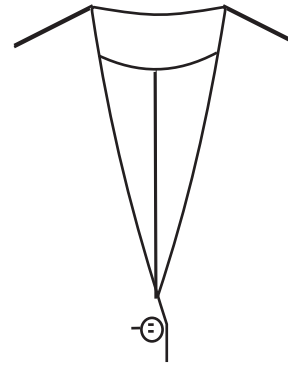


V206

Standard back belt with adjust buckle

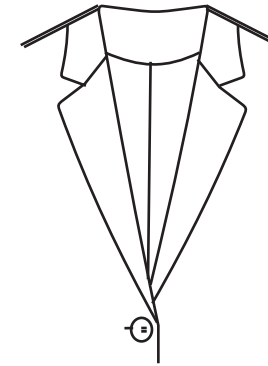
V2C1 Appointed buckle for the back belt-

Collar Style



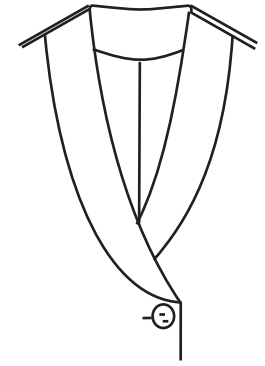
△ V002

Standard V shape
No collar



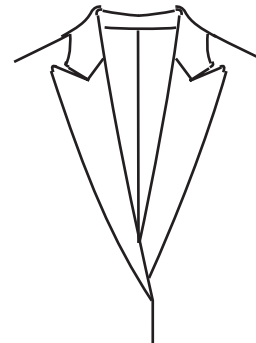
V004

Notch lapel
No collar band



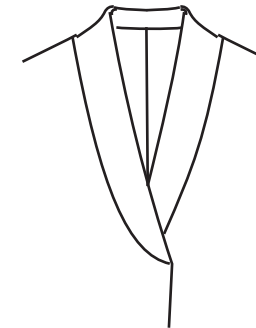
V003

Shawl lapel
No collar band



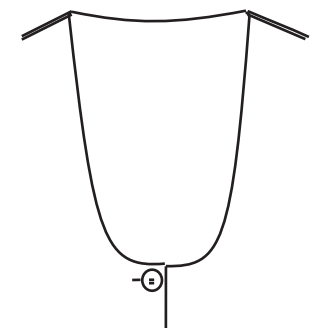
V00J

Peak lapel
With collar band



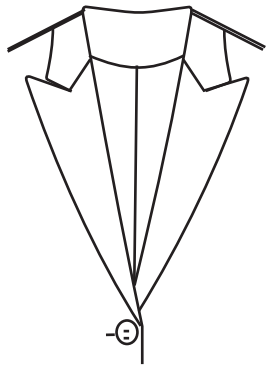
V00V

Shawl lapel with
collar band
(with lapel dart)



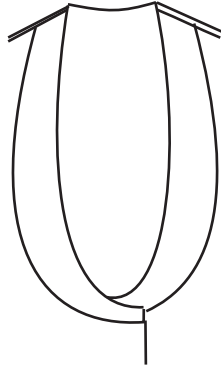
V006

U shape no collar



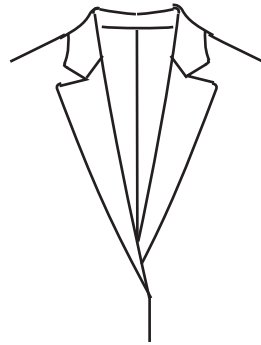
V00D

Peak lapel
No collar band



V855

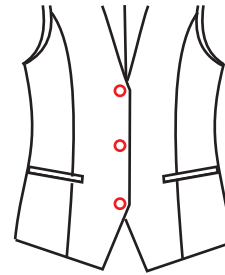
No. 2 U shape shawl lapel
No collar band



V00C

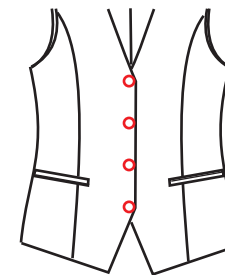
Notch lapel
with collar band

Front Button Options



V01C

Single breasted
3 buttons



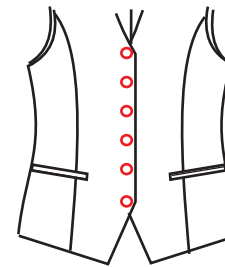
V01D

Single breasted
4 buttons



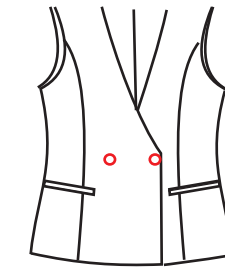
△ V01G

Single breasted
5 buttons



V01P

Single breasted
6 buttons high collar



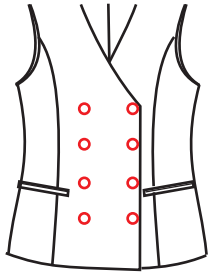
V02N

Double breasted
2 buttons
(1 button fasten)



V01K

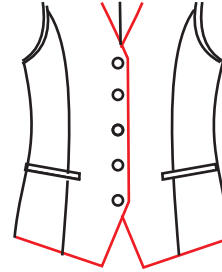
Double breasted
6 buttons
(3 button fasten)



V01L

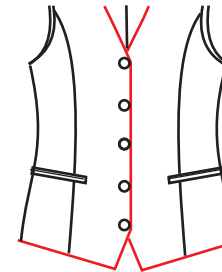
Double breasted
8 buttons
(4 button fasten)

下口形式



△ V01J

Pointed bottom



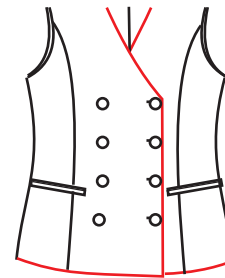
V01M

Small pointed bottom



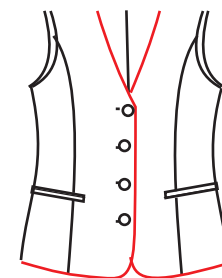
V01H

Flat bottom
slant placket



V01Z

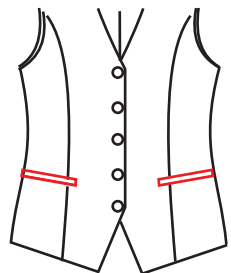
Flat bottom



V01Y

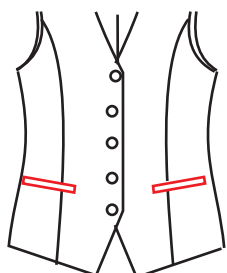
Flat round bottom

Lower Pocket Options



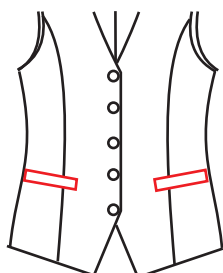
△ V301

Double besom
lower pocket



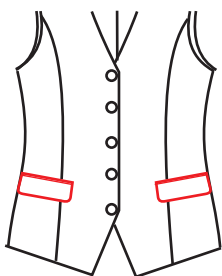
V304

1.0cm width welt
lower pocket



V30B

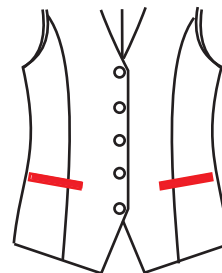
1.5cm width welt
lower pocket



V302

Double besom with flap lower pocket

Lower Pocket Besom Material



V1U3

Lower pocket besom and bottom material appointed-

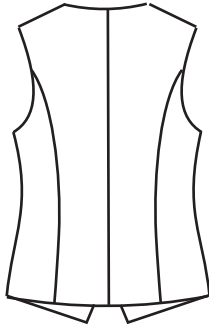
Chest Pocket Options



V111

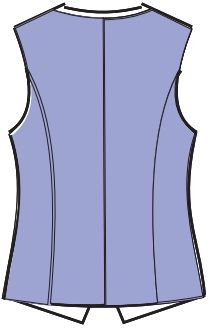
Left single besom breast pocket

Outside Back Material



△ V211

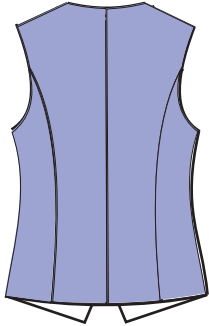
Outside back in fabric material



V212

Outside back in customer appointed fabric material

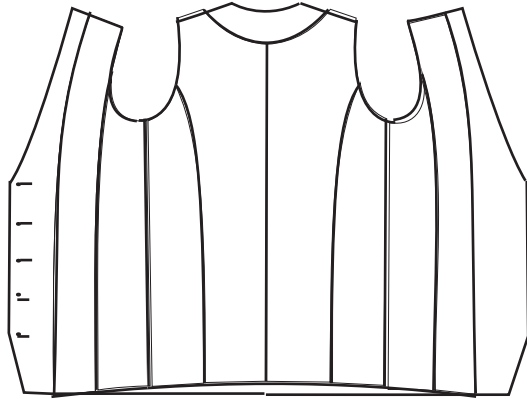
Outside Back Collar Stand Options



V21U

No collar stand

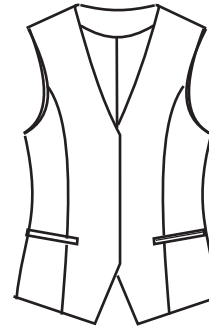
Inner Side Options



V714

Inner side material customer appointed-

Front button style



V42A

No front button, no buttonhole
button and thread sent with clothes

V23E No front buttonhole, only inside flap buttons appointed-

V645 Flaw shape button style

V42A No front button, no buttonhole
button and thread sent with clothes

V23E No front buttonhole, only inside flap buttons appointed-

Button & Buttonhole Options

V649 Handmade button/buttonhole

Label position

V6C1 Label align with left armhole, and 3.0cm aways from facing--

V6C2 Brand label center of collar stand, fastened by two sides---